
AVR320: Software SPI Master

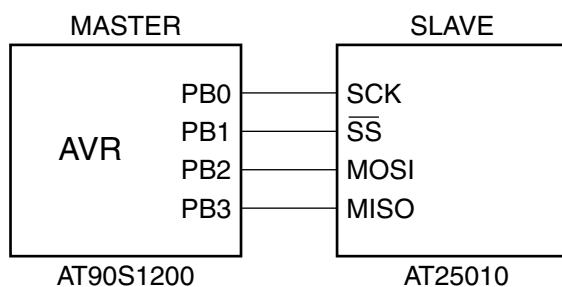
Features

- Up to 444K Bytes/Sec Throughput @ 10 MHz
- Directly Supports Large Block Writes
- Easily Expandable for Multiple SPI Slaves
- Operates in SPI Mode 0
- 16-bit Data, Easily Modified to 8-bit Operation
- No Interrupts Required
- Low Register Count; Only Three Needed (Two if 8-bit Mode)
- Small Code Size; 35 Words, Including Initialization
- Interfaces to Atmel AT25xxx Serial EEPROM

Introduction

The Synchronous Peripheral Interface (SPI) standard is gaining rapidly in popularity. It allows faster communication than TWI and can be implemented using fewer gates which means lower silicon costs. Although the larger AVR family members include a fully functional SPI interface, the smaller members do not. This application note describes a set of low-level routines for software implementation of the SPI protocol, in Master mode (all communications originate from the AVR). These can be used as the basis for communicating with Atmel's 25XXX family of serial EEPROM memories, as well as a host of other peripheral IC's such as display drivers.

Figure 1. Connection Between the AVR MCU and the Slave Device Shown as a Serial EEPROM

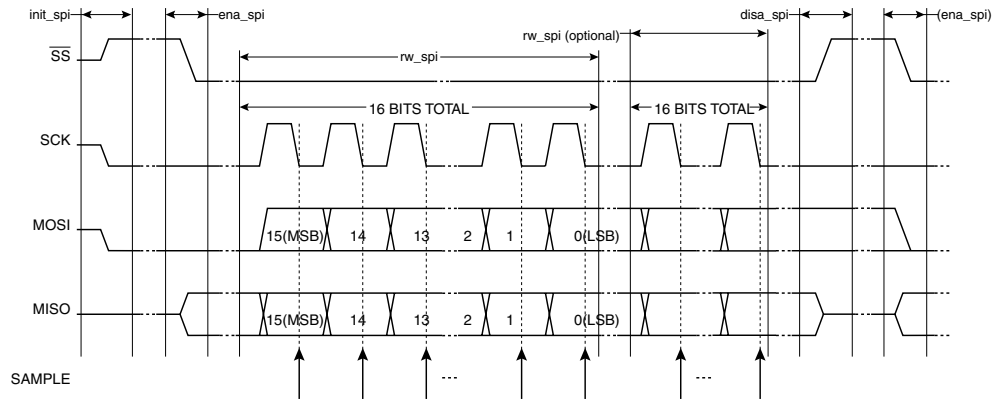


8-bit **AVR**[®]
Microcontroller

Application
Note



Figure 2. SPI Transmission Timing



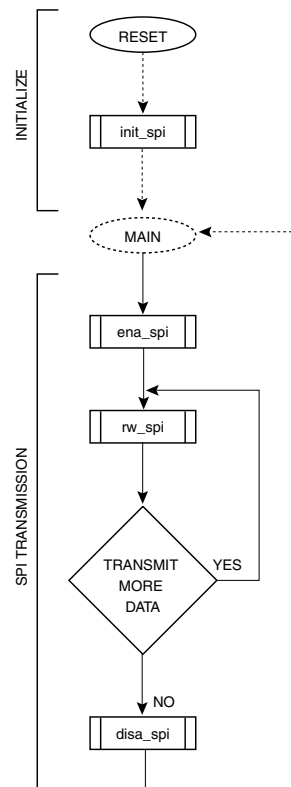
Theory of Operation

SPI Mode 0 implies the following conditions:

1. The SCK signal is low when Idle.
2. MOSI data (from the AVR) must be stable at some time (setup) before the rising edge of the clock.
3. MISO data (from the Slave) is valid at some time (t_{VALID}) after the falling edge of the clock.
4. Data is always sent MSB first.

These routines have been written to meet those standards, with special attention being paid to the boundary conditions, such as t_{VALID} and t_{SETUP} . These timings are detailed later in this application note.

Figure 3. SPI Master Flowchart



Subroutine Description

`init_spi`:

This routine initializes the SPI port lines. The macros will need to be modified if Port B is not used; Otherwise, simply changing the Port Definition. EQU's for the SCK, MOSI, MISO, and NSS (not-Slave-Select) is adequate. This routine has no entry requirements and returns nothing.

`ena_spi`:

This routine makes sure that SCK is low before setting \overline{SS} to the active state. This routine has no entry requirements and returns nothing.

`disa_spi`:

This routine brings the \overline{SS} signal high (inactive). It should be called when a transmission sequence is complete, to prevent spurious clocking of the SPI Slaves. It also has no entry requirements and returns nothing.

`rw_spi`:

This routine sends/receives either an 8- or 16-bit data word, depending on whether the user has modified the source code. It leaves the SCK signal low upon exit, and does not modify the \overline{SS} signal; Therefore, many back-to-back writes are possible by simply calling this routine repeatedly. Entry requirements are simply that the `spi_lo` (and `spi_hi`, if used in 16-bit mode) are initialized with the data to be sent, prior to calling this routine. Upon exit, the same register(s) contain the data received from the SPI Slave.

Conversion to 8-bit Operation

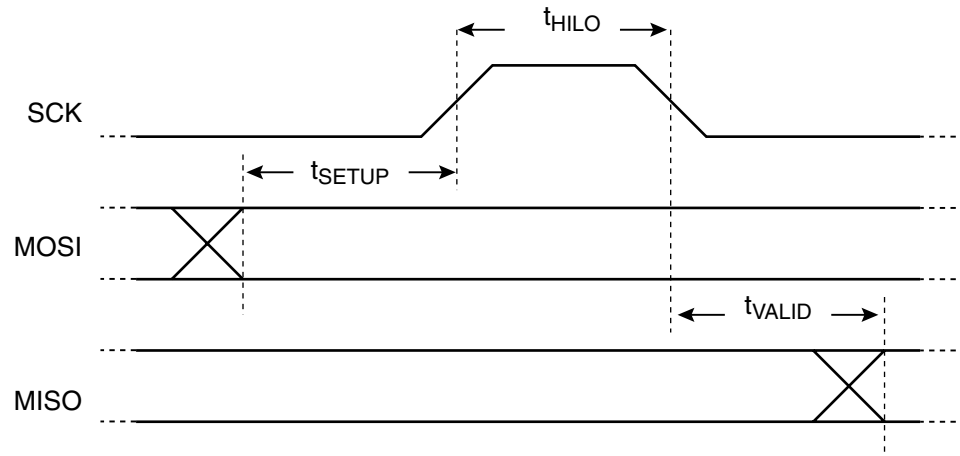
There are only two lines of code that require modification in order for the application note to work with 8-bit data words. Both of the changes are in the `rw_spi` routine. First, the bit counter initialization value must be changed from 16 to 8; Secondly, the line "`rol spi_hi`" must be commented out. No other changes are necessary, except that the `spi_hi` Register is no longer needed and is never used.

Macros

Macros are used to make the code more readable. It is assumed that Port B will be used for the SPI interface; If this is not the case, then the macros themselves must be modified to reflect the correct port. Pins for the four SPI signals are listed under "PORT DEFINITIONS" as EQU's and are easily modified.

The delay function macros deserve some additional explanation. To help conserve registers, this routine gets double-duty out of the TEMP Register by keeping a 5-bit bit counter value and the delay counter for measuring the SCK high and low time. The latter are kept in the uppermost bits. By simply incrementing the upper three bits and watching for a rollover, we can track time without affecting the lowest five bits. Note that, in reality, we are subtracting values rather than adding; The end result is the same, except that Carry is cleared (rather than set) when the value of the upper three bits rolls from 7 to 0.

Figure 4. Setup & Hold Timing



Delay from MOSI Update to SCK Rising Edge

The delay period from updating MOSI to the rising edge of SCK is a critical period, as it is actually the Data Setup Time (t_{SETUP}) for the connected peripheral. In this routine, the amount of setup time is two clock cycles if MOSI is changing to low, three if changing to high (this skew allows for different hi/lo drive levels as well). At a 10 MHz clock, this equates to 200 - 300 ns. If more time is required, NOPs should be placed immediately before the `sck_hi` statement.

SCK Duty Cycle

SCK will spend most of its time low, due to the fact that it is low during the “overhead” portions of the send loop. However, if the connected peripheral can handle a faster rate, the High-time Delay (t_{HILO}) can be reduced to match the minimum SCK-high specification.

With a delay value of one (1) being used, the routine requires approximately 22.5 AVR clocks per data bit, and the SCK-high time is exactly four clocks. At 10 MHz, this would correspond with an equivalent SCK-high spec of 400 ns, and an overall throughput of 444K bytes/sec.

The low-time delay must be set to meet the “SCK fall to MISO (slave data out) Valid” period (t_{VALID}), which is determined by the peripheral. With a delay value of one (1), this routine will have three AVR clocks delay before latching the MISO signal into the pin’s synchronization register. Again, at 10 MHz, this is a 300 ns period, and can be adjusted upward by increasing the delay value.



Atmel Headquarters

Corporate Headquarters

2325 Orchard Parkway
San Jose, CA 95131
TEL 1(408) 441-0311
FAX 1(408) 487-2600

Europe

Atmel Sarl
Route des Arsenaux 41
Case Postale 80
CH-1705 Fribourg
Switzerland
TEL (41) 26-426-5555
FAX (41) 26-426-5500

Asia

Room 1219
Chinachem Golden Plaza
77 Mody Road Tsimhatsui
East Kowloon
Hong Kong
TEL (852) 2721-9778
FAX (852) 2722-1369

Japan

9F, Tonetsu Shinkawa Bldg.
1-24-8 Shinkawa
Chuo-ku, Tokyo 104-0033
Japan
TEL (81) 3-3523-3551
FAX (81) 3-3523-7581

Atmel Operations

Memory

2325 Orchard Parkway
San Jose, CA 95131
TEL 1(408) 441-0311
FAX 1(408) 436-4314

Microcontrollers

2325 Orchard Parkway
San Jose, CA 95131
TEL 1(408) 441-0311
FAX 1(408) 436-4314

La Chantrerie
BP 70602
44306 Nantes Cedex 3, France
TEL (33) 2-40-18-18-18
FAX (33) 2-40-18-19-60

ASIC/ASSP/Smart Cards

Zone Industrielle
13106 Rousset Cedex, France
TEL (33) 4-42-53-60-00
FAX (33) 4-42-53-60-01

1150 East Cheyenne Mtn. Blvd.
Colorado Springs, CO 80906
TEL 1(719) 576-3300
FAX 1(719) 540-1759

Scottish Enterprise Technology Park
Maxwell Building
East Kilbride G75 0QR, Scotland
TEL (44) 1355-803-000
FAX (44) 1355-242-743

RF/Automotive

Theresienstrasse 2
Postfach 3535
74025 Heilbronn, Germany
TEL (49) 71-31-67-0
FAX (49) 71-31-67-2340

1150 East Cheyenne Mtn. Blvd.
Colorado Springs, CO 80906
TEL 1(719) 576-3300
FAX 1(719) 540-1759

Biometrics/Imaging/Hi-Rel MPU/ High Speed Converters/RF Datacom

Avenue de Rochepleine
BP 123
38521 Saint-Egreve Cedex, France
TEL (33) 4-76-58-30-00
FAX (33) 4-76-58-34-80

e-mail

literature@atmel.com

Web Site

<http://www.atmel.com>

© Atmel Corporation 2002.

Atmel Corporation makes no warranty for the use of its products, other than those expressly contained in the Company's standard warranty which is detailed in Atmel's Terms and Conditions located on the Company's web site. The Company assumes no responsibility for any errors which may appear in this document, reserves the right to change devices or specifications detailed herein at any time without notice, and does not make any commitment to update the information contained herein. No licenses to patents or other intellectual property of Atmel are granted by the Company in connection with the sale of Atmel products, expressly or by implication. Atmel's products are not authorized for use as critical components in life support devices or systems.

ATMEL® and AVR® are the registered trademarks of Atmel.

Other terms and product names may be the trademarks of others.



Printed on recycled paper.