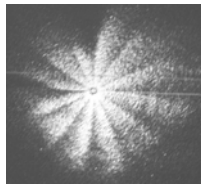


EQUIPMENT AFFECTED: BridgeMaster E Radar Processors exhibiting the spoke effect illustrated below.



APPLICATION: If required.

OBJECT AND METHOD: Replace ALGO1 OTPROM to remove spoke effect appearing in noise towards the centre of the radar image when INTEGRATED is selected and ALGO4 is ON.

TIME REQUIRED: 1 hour on board

PROCEDURE:

Note: Ensure anti-static precautions are taken when handling electronic assemblies and components.

- 1 Switch off the radar system and isolate it from the ship's supply.
- 2 Referring to the Ships Manual, Chapter 6, remove the Radar Processor PCB(s) from the Processor Unit.
- 3 On the Radar Processor PCB, using the extraction tool remove the device labelled 3010D240 or 3010D242 from the socket at U37.
- 4 Insert the device 3010D245 (pin 1 dimple towards edge of board).
- 5 Referring to the Ships Manual, Chapter 6, re-fit the Radar Processor PCB and then re-assemble the Processor unit.
- 6 Finally check that the Radar operation is fully restored.

MANUAL AMENDMENTS:

Insert a copy of this Modification in the Ships Manual, 65800010B, Chapter 8, 'MODIFICATIONS'.

MATERIALS REQUIRED:

Item	Description	Code No	Qty
1	ALGO1 OTPROM	3010D245	1
2	Extractor tool	MA00010389	1