

FIELD REPLACEABLE UNIT DOCUMENTATION

PortegeTM

P2000 Series

GENERAL INFORMATION

**Tools Required for Proper
Disassembly and Reassembly:**

1. Phillips Screwdriver (Size 0)
2. Flat head Screwdriver
3. Case Separator
4. ESD Wrist Strap
5. ESD mat
6. Tweezers

Before attempting any of the following procedures, make sure that the main battery and AC adaptor is not connected to the unit and the environment in which you are working on is protected from Electro-Static discharge(ESD).

TOSHIBA

Tough Enough for Today's World

FIELD REPLACEABLE UNIT DOCUMENTATION

PortegeTM **P2000 Series**

TABLE OF CONTENTS:

- 1. BATTERY PACK REMOVAL**
- 2. OPTIONAL PC CARD REMOVAL**
- 3. MEMORY MODULE REMOVAL**
- 4. HDD REMOVAL**
- 5. KEYBOARD REMOVAL**
- 6. TOP COVER REMOVAL**
- 7. MINI PCI CARD REMOVAL**
- 8. RTC REMOVAL**
- 9. SPEAKER REMOVAL**
- 10. MODEM BOARD REMOVAL**
- 11. SOUND JACK BOARD REMOVAL**
- 12. SYSTEM BOARD REMOVAL**
- 13. TOUCH PAD REMOVAL**
- 14. DISPLAY MASK REMOVAL**
- 15. FL INVERTER AND LCD REMOVAL**

TOSHIBA

Tough Enough for Today's World.

FIELD REPLACEABLE UNIT DOCUMENTATION

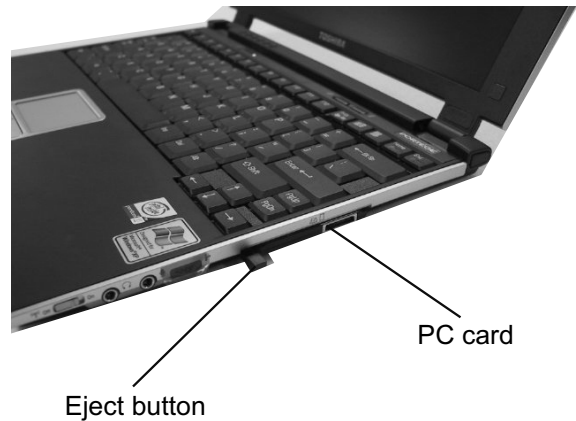
Portege™ P2000 Series

BATTERY PACK REMOVAL



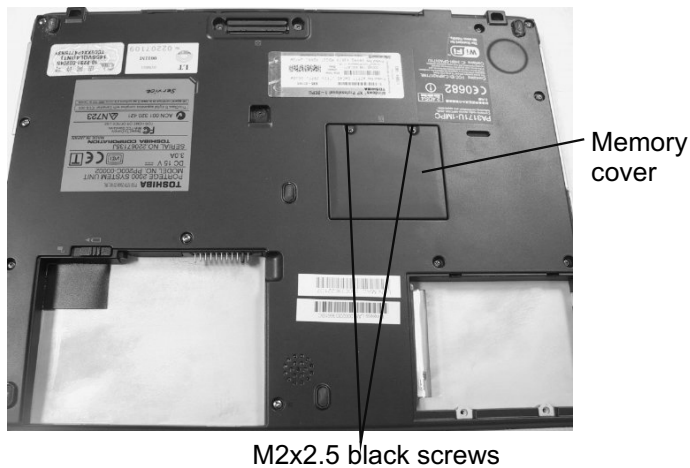
1. Turn the computer upside down as shown.
2. Slide the **battery release lever** to the left to release the battery.
3. Lift out the **battery**.

OPTIONAL PC CARD REMOVAL

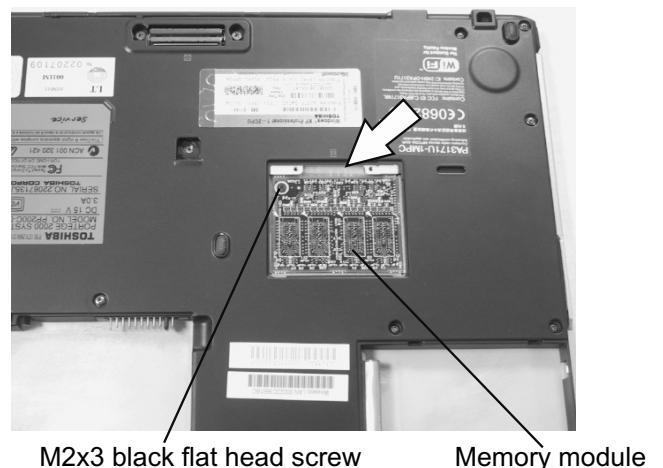


1. Press the **eject button** of the PCCard you want to remove.
 2. Press the extended eject button to pop the **PC card** out.
 3. Grasp the **PC card** and remove it.
- Note:** Before removing any PC Card device, make sure it is "STOPPED" in the PC Card manager.

MEMORY MEMORY REMOVAL



1. Turn the computer upside down.
2. Remove **two M2x2.5 black screws** securing the **memory cover**.



3. Remove **one M2x3 black flat head screw** securing the memory module.
4. Disconnect the **memory module** from the top side as shown by the arrow above.

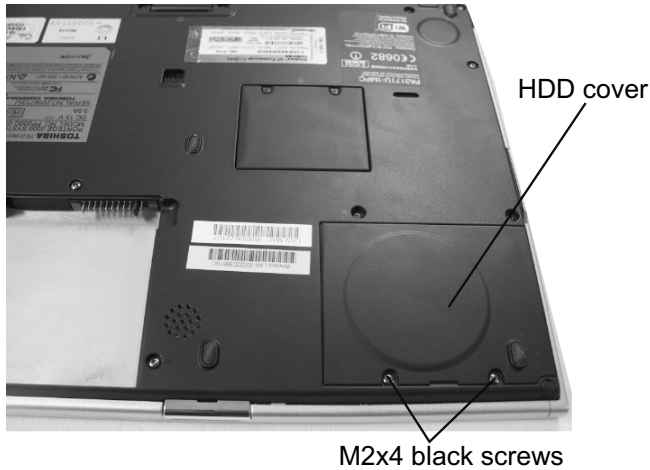
TOSHIBA

Tough Enough for Today's World.

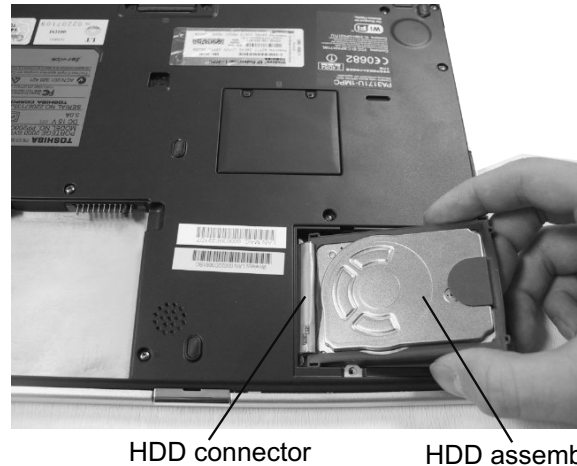
FIELD REPLACEABLE UNIT DOCUMENTATION

Portege™ P2000 Series

HDD REMOVAL



1. Turn the computer upside down.
2. Remove **two M2x4 black screws** securing the **HDD cover** and lift it out.



3. Lift up the **rubber handle** and hold the HDD assembly as shown above.
4. Disconnect the **HDD assembly** from the HDD connector.

CAUTION: Be very careful not to press on the TOP or BOTTOM of the HDD. Pressure can destroy data or damage the drive.

HDD REMOVAL



5. Remove the **HDD rubber holder** and the **HDD pad**.

KEYBOARD REMOVAL



1. Turn the computer upside down.
2. Remove **one M2x3 black flat head screw** securing the keyboard.

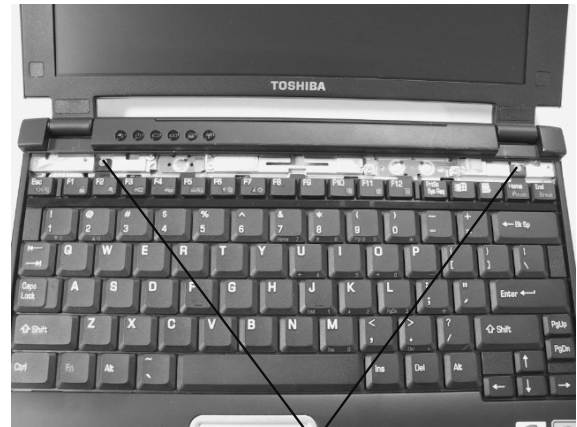
TOSHIBA

Tough Enough for Today's World.

FIELD REPLACEABLE UNIT DOCUMENTATION

Portege™ P2000 Series

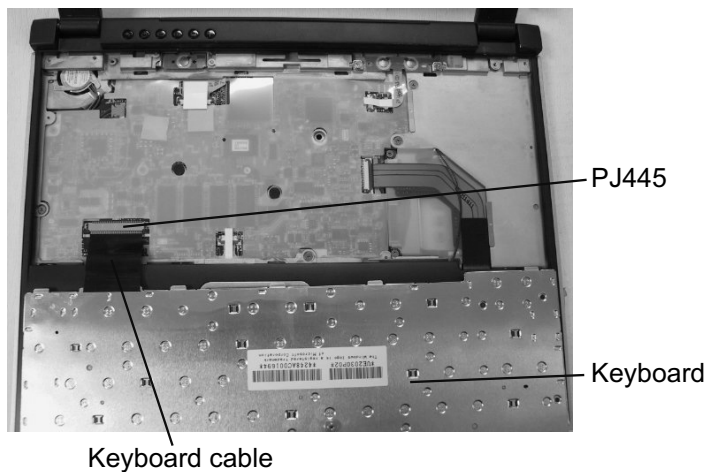
KEYBOARD REMOVAL



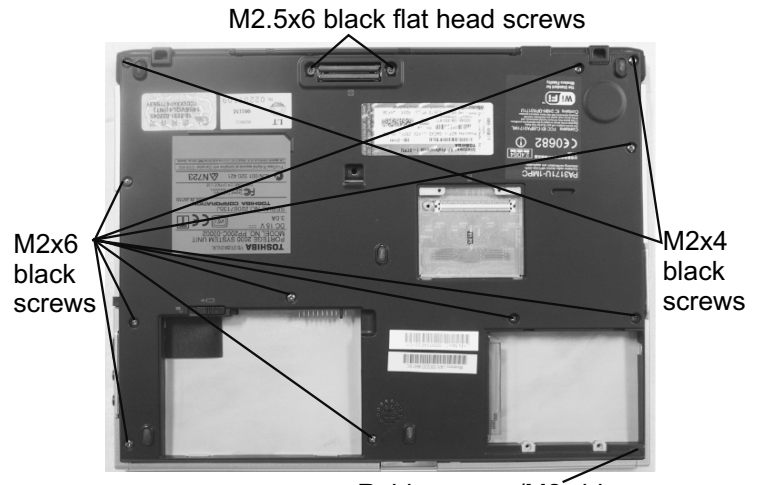
3. Unlatch the **keyboard holder** at the top of the keyboard.

4. Remove **two M2x3 silver flat head screws** securing the keyboard.

KEYBOARD REMOVAL



TOP COVER REMOVAL



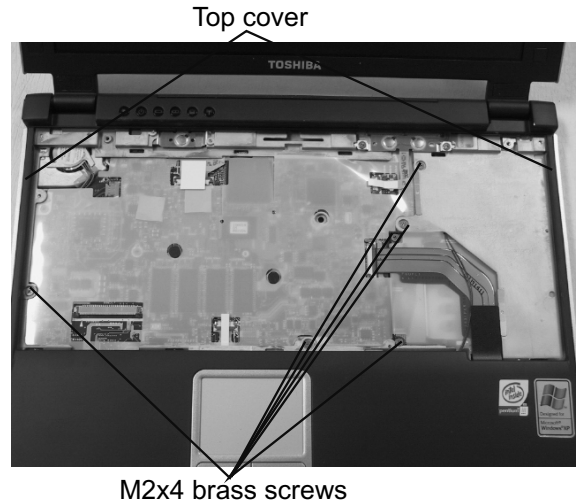
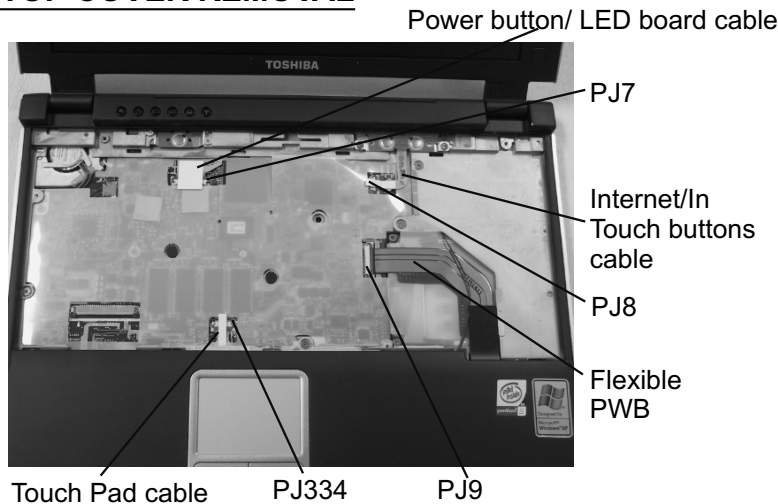
5. Lift up the **keyboard** and lay it on the palm rest.
6. Disconnect the **keyboard cable** from **PJ445** and lift out the keyboard.

1. Turn the computer upside down.
2. Remove the rubber cover close to the HDD slot and remove one M2x4 brass screw.
2. Remove the following screws from the bottom cover:
- 9 M2x6 black screws
- 2 M2.5x6 black flat head screws
- 2 M2x4 black screws and 1 M2x4 brass screw

FIELD REPLACEABLE UNIT DOCUMENTATION

PortegeTM P2000 Series

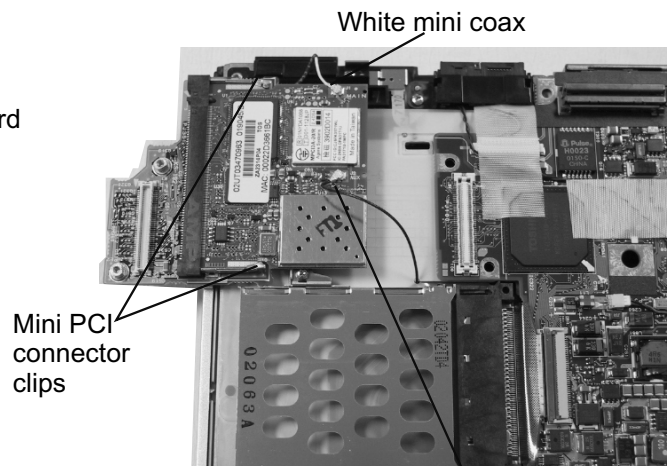
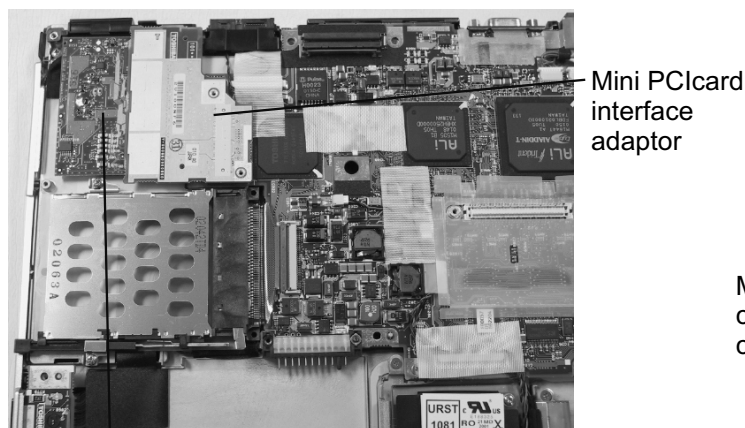
TOP COVER REMOVAL



3. Turn the computer right side up and open the display.
4. Disconnect the following cables by carefully lifting the lever using from the PCB:
 - Touch Pad cable from PJ334
 - Flexible PWB from PJ9
 - Internet/ In-Touch Buttons cable from PJ8
 - Power Button/ LED board cable from PJ7

5. Remove **six M2x4 brass screws** securing the top cover.
6. Separate the **top cover** from the bottom cover.

MINI PCI CARD REMOVAL



1. Disconnect the **Mini PCI card interface adaptor** from the system board.
2. Carefully lift up the Mini PCI card interface adaptor and turn it over as shown on the next picture.

3. Disconnect the **black and white mini coax** from the Mini PCI wireless LAN card.
4. Spread the **mini PCI connector clips** and pull the wireless LAN card out of the connector about 30 degrees.

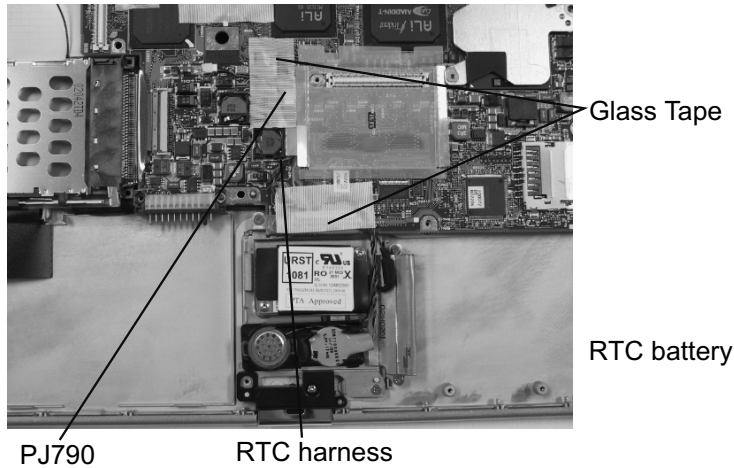
TOSHIBA

Tough Enough for Today's World.

FIELD REPLACEABLE UNIT DOCUMENTATION

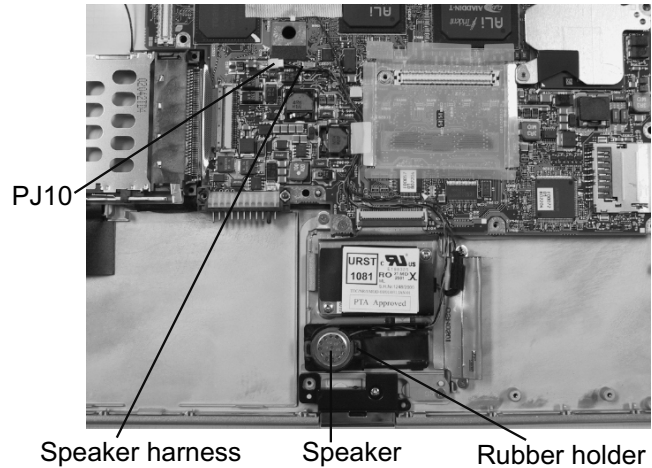
PortegeTM P2000 Series

RTC REMOVAL



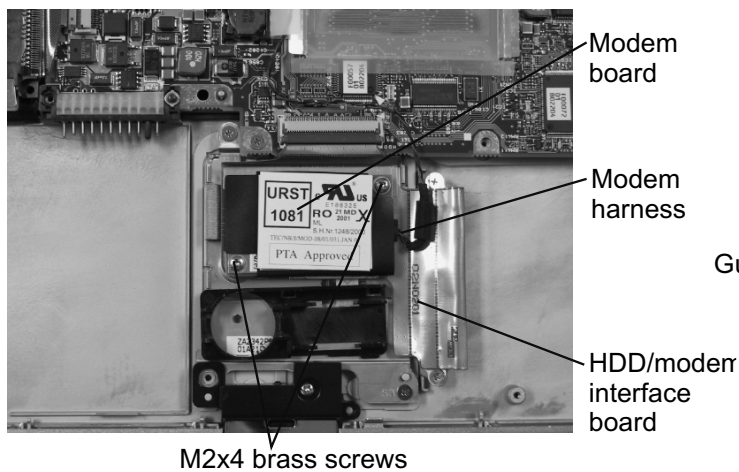
1. Peel off two strips of **glass tape** securing the RTC cable.
2. Disconnect the **RTC harness** from **PJ790** and lift it out.

SPEAKER REMOVAL



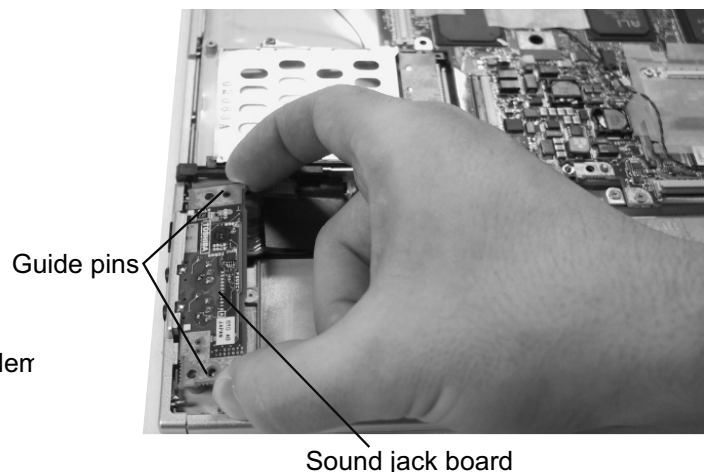
1. Disconnect the **speaker harness** from **PJ10** on the system board.
2. Lift out the **speaker** and separate the **rubber holder**.

MODEM BOARD REMOVAL



1. Disconnect the **modem harness** from the modem board.
2. Remove **two M2x4 brass screws** securing the modem board to the HDD/Modem interface board.
3. Disconnect the **modem board** from **PJ3** on the HDD/modem board

SOUND JACK BOARD REMOVAL

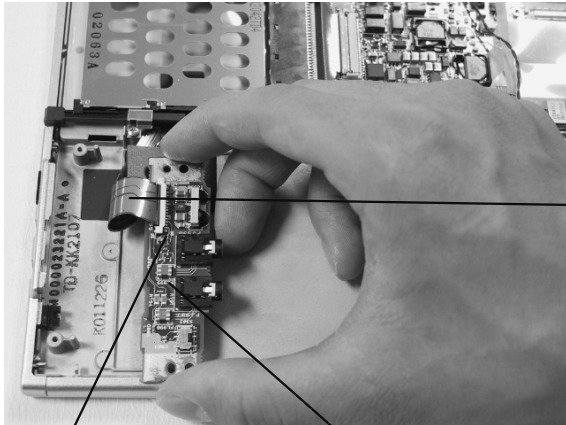


1. Lift up the **sound jack board** to free it from the guide pins and pull it out.
2. Turn the board over as shown on the next picture.

FIELD REPLACEABLE UNIT DOCUMENTATION

PortegeTM P2000 Series

SOUND JACK BOARD REMOVAL



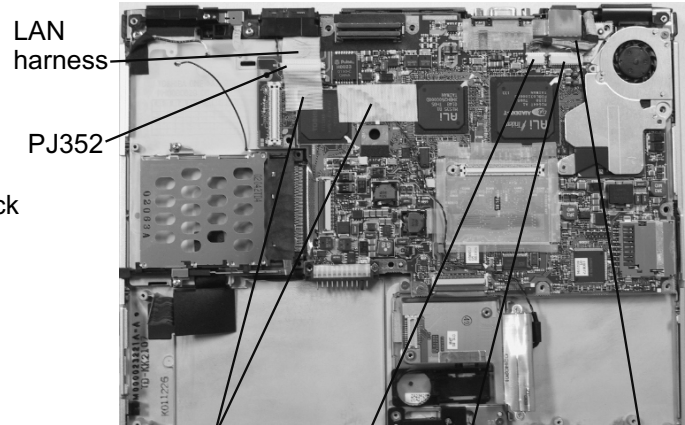
Sound jack cable

PJ999

Sound jack board

3. Disconnect the **sound jack cable** from **PJ999** on the sound jack board.
4. Lift out the **sound jack board**.

SYSTEM BOARD REMOVAL



LAN harness

PJ352

Glass tape

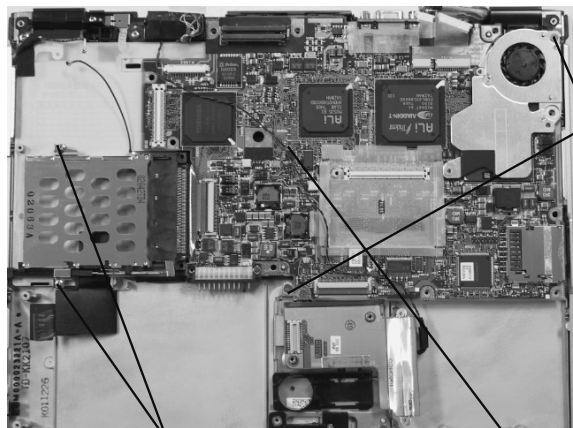
PJ35

PJ34

LCD/FLharness

1. Peel off the **glass tapes** securing the modem harness and the LAN harness.
2. Disconnect the **LAN harness** from **PJ352** on the system board.
3. Disconnect the **LCD/FL harness** from **PJ34** and **PJ35** on the system board.

SYSTEM BOARD REMOVAL

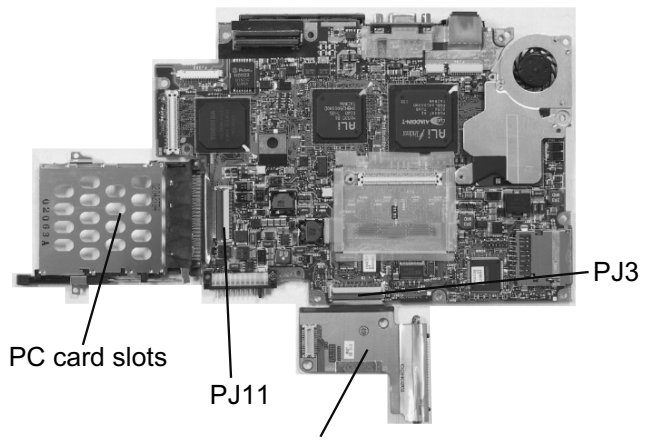


M2x4 brass flat head screws

M2x4 brass flat head screws

System board

4. Remove **two M2x4 flat head brass screws** securing the system board.
5. Remove **two M2x4 brass screws** securing the PC card slots.
6. Lift out the system board.



PC card slots

PJ11

HDD/modem interface cable

PJ3

7. Disconnect the **PC card slots** from **PJ11** on the system board.
8. Disconnect the **HDD/modem interface cable** from **PJ3** on the system board.
9. Remove two cool sheets on the top side of the system board.

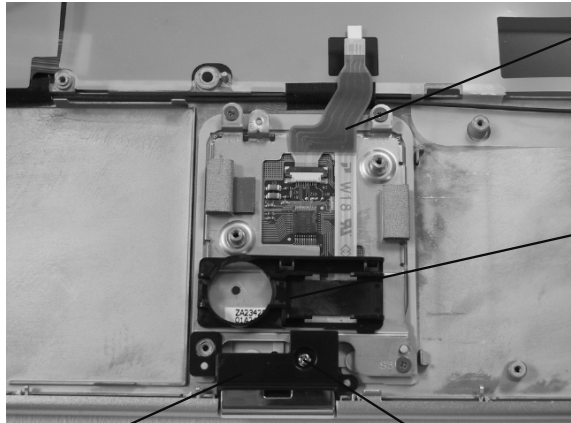
TOSHIBA

Tough Enough for Today's World.

FIELD REPLACEABLE UNIT DOCUMENTATION

PortegeTM P2000 Series

TOUCH PAD REMOVAL



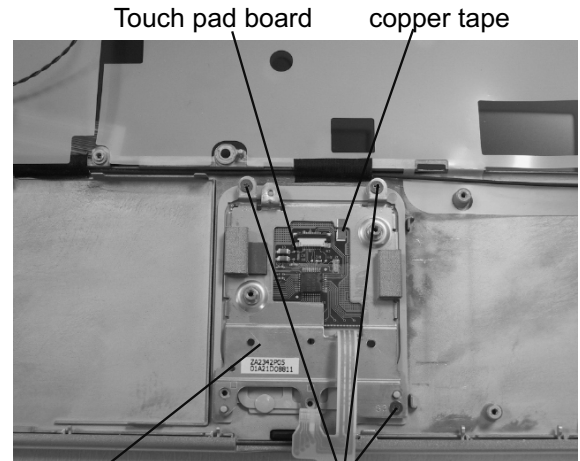
Touc pad/
Membrane
cable

RTC/
Speaker
holder

LCD latch assy

M2x4 brass screws

1. Remove the **RTC/Speaker holder**.
2. Remove **one M2x4brass screw** securing the LCD latch assembly and lift it out.
3. Disconnect the **Touch pad/ Membrane cable** from the touch pad board.



Touch pad board

copper tape

Touch pad bracket

M2x3 silver flat head screws

1. Carefully peel off the **copper tape**.
2. Remove **four M2x3 silver flat head screws** securing the Touch pad assembly.
3. Lift out the **touch pad assembly**.
4. Separate the **touch pad board** from the touch pad bracket.

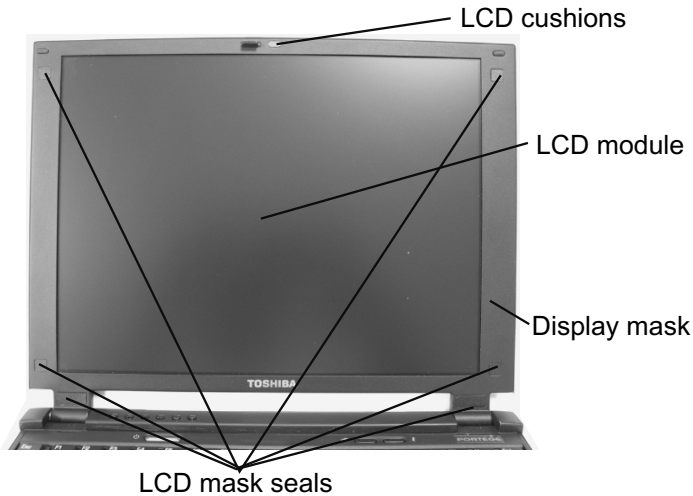
TOSHIBA

Tough Enough for Today's World.

FIELD REPLACEABLE UNIT DOCUMENTATION

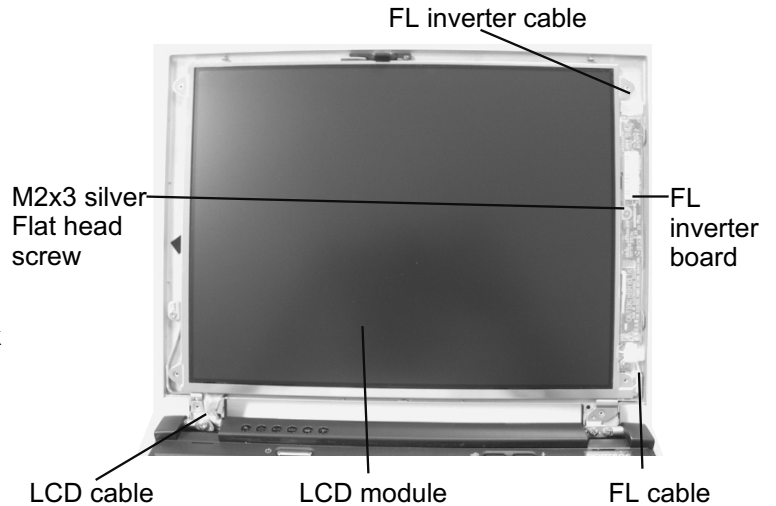
PortegeTM P2000 Series

DISPLAY MASK REMOVAL



1. Remove **one LCD cushions** and **six LCD mask seals** using a pair of fine-tipped tweezers.
2. Remove **one M2x3 black flat head screw** and **six M2x3 silver flat head screws** securing the display mask.
3. Lift out the **display mask**.

FL INVERTER AND LCD REMOVAL



1. Remove **one M2x3 silver flat head screw** securing the FL inverter board.
2. Lift up the **FL inverter board** and disconnect the **FL cable** from **CN2** and the **FL inverter cable** from **CN1**.
3. Carefully rotate out the top of the LCD module enough to access the LCD/FL cable..
4. Disconnect the **LCD/FL cable** and lift it out.

TOSHIBA

Tough Enough for Today's World.