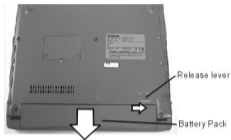


Portege™

3110CT

BATTERY PACK REMOVAL



1. Turn the computer upside down as shown.
2. Slide the **battery release lever** in the direction of the arrow.
3. Pull the **battery pack** slightly forward and lift it out.

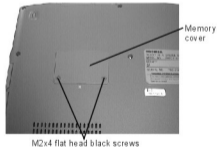
OPTIONAL PCMCIA CARD REMOVAL



1. Slide the eject button to the right.
2. Grasp the PC card and remove it.

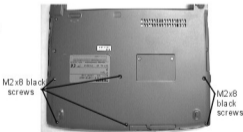
NOTE: Before removing any PCMCIA device, make sure it is "Stopped" in the PC Card Manager.

EXPANSION MEMORY REMOVAL



1. Turn the computer upside down.
2. Remove **two M2x4 flat head black screws** securing the memory cover.
3. Lift off the cover.
4. Push the memory clips outward and pull the **memory module** out of the connector on a 45 degree angle.

MEMBRANE/IPS SWITCH REMOVAL



1. Remove **six M2x8 flat head screws** securing the palm rest cover.

TOSHIBA

Tough Enough for Today's World.

FIELD REPLACEABLE UNIT DOCUMENTATION

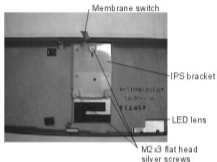
Portege™

3110CT

MEMBRANE and IPS SWITCH REMOVAL

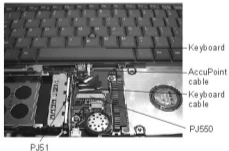


2. Turn the computer right side up and lift up the palm rest cover.
3. Release the **IPS cable** by unlocking the connector **PJ11** and remove the **palm rest cover**.



4. Remove **three M2x3 flat head silver screws** securing the IPS bracket and lift off the bracket.
5. Remove the **membrane switch** and the IPS switch.

KEYBOARD REMOVAL



1. Disconnect the **keyboard cable** from **PJ550**.
2. Disconnect the **AccuPoint cable** from **PJ51**.
3. Lift out the **keyboard**.

SPEAKER REMOVAL



1. Disconnect the speaker cable from **PJ72** on the system board.
2. Lift out the speaker assembly and remove the **speaker** from the **speaker holder**.

TOSHIBA

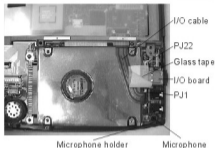
Tough Enough for Today's World.

FIELD REPLACEABLE UNIT DOCUMENTATION

Portege™

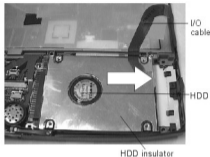
3110CT

MICROPHONE and I/O BOARD REMOVAL



1. Peel off the **glass tape** covering the microphone cable and I/O cable.
2. Disconnect the microphone cable from **PJ22**.
3. Lift the microphone assembly off of the base, and remove the microphone from the rubber holder.
4. Disconnect the **I/O cable** from **PJ1** on the I/O board.
5. Lift off the microphone base and lift out the **I/O board**.

HDD REMOVAL

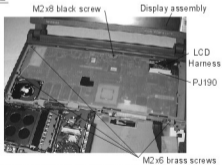


1. Fold back the **I/O cable**.
2. Slide the **HDD** to the right to disconnect from the system board.
3. Slide the drive out of the **HDD insulator**.

DISPLAY ASSEMBLY and UPPER COVER REMOVAL



1. Turn the computer upside down as shown.
2. Remove **two M2 x6 black screws** from the back corners of the computer, and **two M2x8 black screws** along the edge.



3. Turn the computer right side up and disconnect the **LCD harness** from **PJ190**.
4. Remove **one black screw** and **four M2 x6 brass screws** securing the display assembly.
5. Remove the display assembly from the bottom assembly.

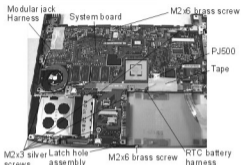
TOSHIBA

Tough Enough for Today's World.

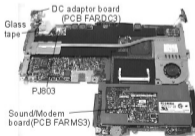
Portege™

3110CT

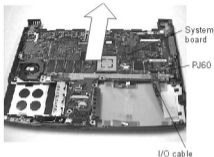
SYSTEM BOARD REMOVAL



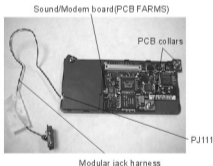
1. Remove **one M2x6 brass screw** securing the latch hole assembly and remove the **latch hole assembly**.
2. Peel off the **glass tape** covering the RTC battery harness and disconnect the **RTC battery harness** from **PJ500**.
3. Peel off the **glass tape** covering the **modular jack harness**.
4. Remove **one M2x6 brass screw** and **four M2x3 silver screws** securing the system board.



7. Turn the system board assembly upside down.
8. Peel off the **glass tape** securing the DC adaptor harness.
9. Disconnect the harness of the DC adaptor board (PCB FARDC3) from **PJ803** and remove the **DC adaptor board**.
10. Remove the **sound/modem board (PCB FARMS3)** from **PJ130** on the main system board.



5. Disconnect **I/O cable** from **PJ60**.
6. Lift out the **system board** in the direction of the arrow as shown above.



11. Disconnect the **modular jack harness** from **PJ111** on the sound/modem board (PCB FARMS3).
12. Remove **two PCB collars** from the insert pins.

TOSHIBA

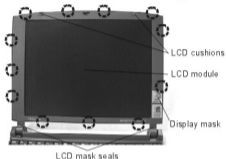
Tough Enough for Today's World.

FIELD REPLACEABLE UNIT DOCUMENTATION

Portege™

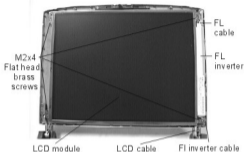
3110CT

DISPLAY MASK REMOVAL



1. Remove **two LCD cushions** and **two LCD mask seals** using a pair of fine-tipped tweezers.
2. Remove **four M2x4 brass screws** securing the display mask seals.
3. There are **12 latches** securing the display mask. Carefully insert your fingers between the **display mask** and the **LCD module** and pry open the display mask.

FL INVERTER AND LCD REMOVAL



1. Lift up the **FL inverter board** and disconnect the **FL cable** from **CN2** and the **FL inverter cable** from **CN1**.
3. Remove **four M2x3 flat brass screws** securing the LCD module.
4. Carefully rotate the LCD module from left to right of the LCD cover and disconnect the **LCD cable** from the **LCD module**.

TOSHIBA

Tough Enough for Today's World.