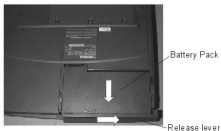


# FIELD REPLACEABLE UNIT DOCUMENTATION

Tecra™

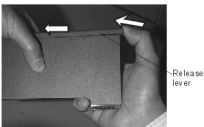
## 8000 Series

### BATTERY PACK REMOVAL



1. Turn the computer upside down as shown.
2. Slide the **battery release lever** in the direction of the arrow.
3. Pull the **battery pack** slightly forward and lift it out.

### RELEASE LEVER REMOVAL



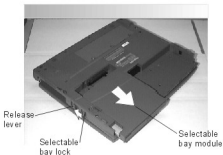
4. Remove the **release lever** in the direction of the arrow.

### OPTIONAL PCMCIA CARD REMOVAL



1. Pull out the **eject button** of the **PC card** to be removed.
2. Press the **eject button** to pop the **PC card** out.
4. Grasp the **PC card** and remove it.

### SELECTABLE BAY REMOVAL



1. Turn the computer upside down.
2. Push the **Selectable bay lock** to unlock position.
3. Slide the **release lever** in the direction of the arrow.
4. Pull out the **Selectable bay module** in the direction of the arrow.

# TOSHIBA

Tough Enough for Today's World.

# FIELD REPLACEABLE UNIT DOCUMENTATION

Tecra™

## 8000 Series

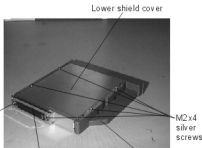
### FDD DISASSEMBLY



FDD

Release lever

1. Push both **release levers** and take the **FDD** out.



Lower shield cover

M2x6  
silver  
screw

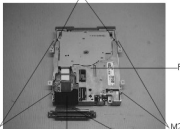
M2x4  
silver  
screws

Flexible cable cover

Upper frame

2. Remove **five M2x4 silver screws** and **one M2x6 silver screw**.
3. Remove **lower shield cover** and the **flexible cable cover**.
4. Lift the **FDD** out from the **upper frame**.

### CD-ROM DRIVE DISASSEMBLY



Brackets

FDD

M2.5x2  
Flat head  
brass  
screws

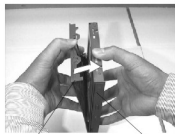
Black  
connector  
cover

Flexible  
cable

M2.5x2  
Flat head  
brass  
screws

5. Remove **black connector cover** and disconnect the **flexible cable** from the **FDD**.
6. Remove **four M2.5 flat head brass screws** and detach the **two brackets**.

**NOTE:** The brackets, flexible cable, black connector cover and the flathead screws are all separate parts. Please **DO NOT** return them to **TOSHIBA**.



Selectable bay cover

CD-ROM

1. Remove the **Selectable bay cover**.

# TOSHIBA

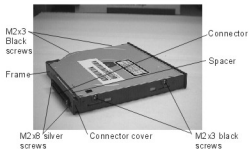
Tough Enough for Today's World.

# FIELD REPLACEABLE UNIT DOCUMENTATION™

## Tecra™

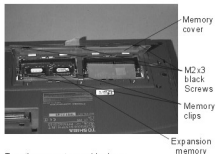
### 8000 Series

#### CD-ROM DRIVE DISASSEMBLY



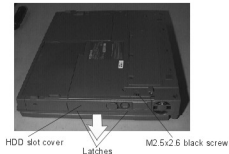
1. Remove **four M2x3 black screws** and the **frame**.
2. Remove **two M2x6 silver screws**.
3. Remove the **spacer, connector,** and the **connector cover** from the CD-ROM drive.

#### EXPANSION MEMORY REMOVAL



1. Turn the computer upside down.
2. Remove **three M2x3 black screws** and remove the **memory cover**.
3. Push the **memory clips** outward and pull the **expansion memory** out of the connector on a 45 degree angle.

#### HDD REMOVAL



1. Turn the computer upside down.
2. Remove **one M2.5x2.6 black screw**.
3. Push the cover by the dotted **latches** until it clicks.
4. Remove the **HDD slot cover** by sliding it in the direction of the arrow.



1. Remove the **HDD pack** by pulling on the **white vinyl grip**.

# TOSHIBA

Tough Enough for Today's World.

# FIELD REPLACEABLE UNIT DOCUMENTATION

Tecra™

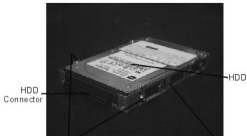
## 8000 Series

### HDD REMOVAL



M3x4 flat head brass screws

1. Place the **HDD** on a flat surface and remove **four M3x4 flat head brass screws**.
2. Remove the **top cover**.



M3x4 flat head brass screws

HDD bracket

3. Remove **two M3x4 flat head brass screws** securing the **HDD** and take the **HDD bracket** out.
4. Remove the **HDD connector**.

**NOTE:** The HDD connector, top cover, screws and the bracket are all separate parts. Please **DO NOT** return them to **TOSHIBA**.

### KEYBOARD REMOVAL



1. Open the display panel.
2. Unlatch the **Keyboard holder** at the four points and remove it.
3. Remove **one M2.5x4 brass screw** and remove the **keyboard retainer**.

### KEYBOARD REMOVAL



4. Lift the **Keyboard** out and lay it on the palm rest. Be careful not to apply pressure on the keyboard cable.
5. Disconnect the **Keyboard cable** from **PJ550** on the system board and remove the **Keyboard**.

# TOSHIBA

Tough Enough for Today's World.

# FIELD REPLACEABLE UNIT DOCUMENTATION

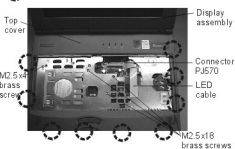
Tecra™

## 8000 Series

### TOP COVER REMOVAL

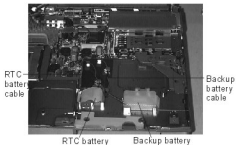


1. Turn the computer upside down and remove the following screws:
  - 3 **M2.5x4 black screws** from the battery slot
  - 2 **M2.5x6 black screws** from the battery slot
  - 2 **M2.5x4 black screws** from the selectable bay
  - 2 **M2.5x6 black screws** from the selectable bay
  - 3 **M2.5x4 black screws** from the back of the computer.
2. Turn the computer right side up and open the display.



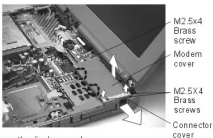
3. Remove **four M2.5x18 brass screws** and **one M2.5x4 brass screw**.
4. Disconnect the **LED cable** from **PJ570** on the system board.
5. Release **nine latches** securing the **top cover** and the **display assembly**; **two latches** on the left side, **four** on the front and **three latches** on the right side.
6. Lift up the **top cover**.

### RTC AND BACKUP BATTERY REMOVAL



1. Open the RTC and backup battery cover.
2. Disconnect the **RTC battery cable** from **PJ500**.
3. Disconnect the **backup battery cable** from **PJ910**.
4. Lift out the RTC and backup battery.

### MODEM BOARD REMOVAL



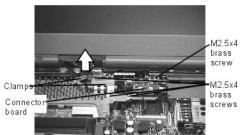
1. Open the display panel.
2. Remove **two M2.5x4 brass screws** and the **connector cover**.
3. Release the **two latches** holding the **modem cover** in the direction of the arrow.
4. Remove **one M2.5x4 screws** securing the modem board.
5. Pull the modem board out of the connector.

# TOSHIBA

Tough Enough for Today's World.

### 8000 Series

#### CONNECTOR BOARD REMOVAL



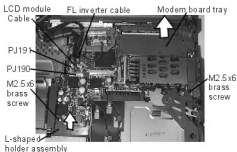
1. Remove **three M2.5x4 brass screws**.
2. Remove **two cable clamps** in the direction of the arrow.
3. Remove **one M2.5x4 brass screw** holding the connector board.
4. Disconnect the **Connector board**.

#### HEAT SINK REMOVAL

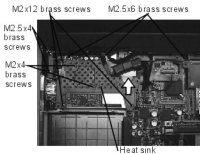


1. Turn the computer upside down and remove **three M2.5x6 black screws**.

#### HEAT SINK REMOVAL



2. Turn the computer right side up, remove **one M2.5x6 brass screw** securing **L-shaped holder assembly** and lift the holder in the direction of the arrow.
3. Disconnect the following cables from the system board:  
 -FL inverter board cable from PJ191  
 -LCD module cable from PJ190
4. Remove **one M2.5x6 screw** holding the modem board tray.
5. Remove **modem board tray** in the direction of the arrow.



6. Remove the following screws:  
 -2 M2.5x4 brass screws  
 -2 M2x4 brass screws  
 -3 M2.5x6 brass screws  
 -3 M2x12 brass screws
7. Lift the **heat sink** out in the direction of the arrow.

# TOSHIBA

Tough Enough for Today's World.

# FIELD REPLACEABLE UNIT DOCUMENTATION

## Tecra™

### 8000 Series

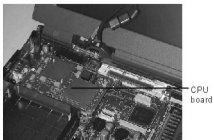
#### FAN REMOVAL



1. Disconnect the **fan cable** from the system board.
2. Remove the **fan** in the direction of the arrow.

**NOTE:** The cooling fan is a separate part. Please DO NOT return the FAN to TOSHIBA.

#### CPU BOARD REMOVAL

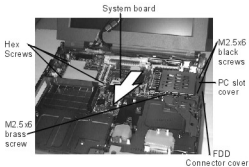


1. Remove the **CPU board** out of the system board.

#### SYSTEM BOARD REMOVAL



1. Turn the computer upside down and remove **three M2.5x6 black screws**.
2. Turn the computer right side up.



3. Remove **two M2.5x6 black screws** securing PC card slot cover and lift out the cover.
4. Remove the M2.5x6 brass screw securing the system board.
5. Remove **three hex screws** securing the insulator and system board.
6. Lift out the front end of the system board in the direction of the arrow.

# TOSHIBA

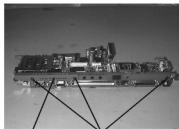
Tough Enough for Today's World.

# FIELD REPLACEABLE UNIT DOCUMENTATION

Tecra™

## 8000 Series

### SYSTEM BOARD REMOVAL

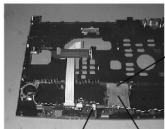


Hinge cover assy. M2.5x4 black screws

1. Remove **three M2.5x4 black screws** and remove the **hinge cover assembly**.

**NOTE:** The hinge cover assembly is a separate part. Please **DO NOT** return this part to **TOSHIBA**.

### MEMBRANE SWITCH REMOVAL

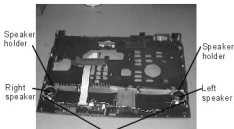


M2.5x4 Brass screw

PJ50 Membrane switch

1. Turn the top cover upside down.
2. Disconnect the **membrane switch cable** from **PJ50**.
3. Remove **one M2.5x4 brass screw** securing membrane switch.
4. Lift out the **membrane switch** from the top cover.

### SPEAKERS REMOVAL

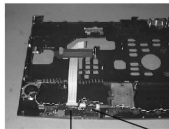


M2.5x4 screws

Speaker holder Speaker holder  
Right speaker Left speaker

1. Turn the top cover upside down.
2. Disconnect the **speaker cables** from **PJ60**.
3. Remove **two M2.5x4 brass screws** securing the speaker holder.
3. Remove the **speaker holders**.
4. Lift out the **speakers**.

### LED BOARD REMOVAL



LED board M2.5x4 brass screw

1. Turn the top cover upside down.
2. Remove **one M2.5x4 screw** securing **LED board**.
3. Lift out the **LED board**.

# TOSHIBA

Tough Enough for Today's World.

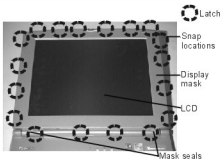


# FIELD REPLACEABLE UNIT DOCUMENTATION

Tecra™

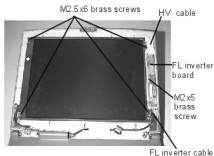
## 8000 Series

### 12.1 TFT DISPLAY MASK REMOVAL



1. Remove **two plastic seals** at the bottom corners of the display assembly using a pair of fine tipped tweezers.
2. Remove **two M2.5x6 brass screws**.
3. There are **21 latches** securing the display mask. Carefully insert your fingers between the mask and the LCD panel and pry open the latches starting from the **top six latches**, to the **five latches on the right and left sides**, ending with the five bottom latches.

### FL INVERTER AND 12.1TFT LCD REMOVAL



1. Remove **one M2x5 brass screw** securing FL inverter board.
2. Carefully rotate the **FL inverter board** out; from right to left then disconnect the **FL inverter cable** from **Cn1** and the **HV cable** from **CN2**.
3. Remove **four M2.5x6 brass screws** securing the **LCD module**.
4. Carefully rotate the **LCD module** from right to left of the **LCD cover**.
5. Disconnect the **LCD cable** from the **LCD module** and remove the **LCD** from the computer.

# TOSHIBA

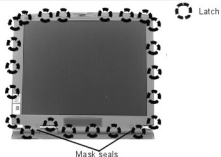
Tough Enough for Today's World.

# FIELD REPLACEABLE UNIT DOCUMENTATION

Tecra™

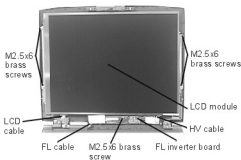
## 8000 Series

### 13.3 TFT DISPLAY MASK REMOVAL



1. Remove **two mask seals** at the bottom corners of the display assembly using a pair of fine-tipped tweezers.
2. Remove **two M2.5x6 brass screws**.
3. There are **22 latches** securing the **display mask**. Carefully insert your fingers between the mask and the LCD panel and pry open the latches starting from the **top six latches**, to the **five latches on the right and left sides**, ending with the **six bottom latches**.

### FL INVERTER AND 13.3 TFT LCD REMOVAL



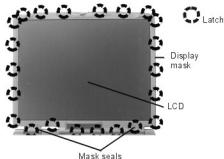
1. Remove tape and **one M2x5 brass screw** securing **FL inverter board**.
2. Carefully lift up the **FL inverter board** and disconnect the **FL inverter cable** from **CN1** and the **HV cable** from **CN2**.
3. Remove **four M2.5x6 brass screws** securing the **LCD module**.
4. Carefully rotate the **LCD module** from right to left of the LCD cover.
5. Disconnect the **LCD cable** from the **LCD module** and remove the **LCD** from the computer.

# TOSHIBA

Tough Enough for Today's World.

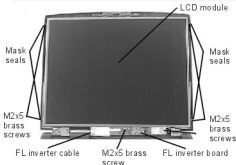
## 8000 Series

## 14.1 TFT DISPLAY MASK REMOVAL



1. Remove **two mask seals** at the bottom corners of the display assembly using a pair of fine-tipped tweezers.
2. Remove **two M2.5x6 brass screws**.
3. There are **22 latches** securing the **display mask**. Carefully insert your fingers between the mask and the LCD panel and pry open the latches starting from the **top six latches**, to the **five latches on the right and left sides**, ending with the **six bottom latches**.

## FL INVERTER AND 14.1 TFT LCD REMOVAL



1. Remove **one M2x5 brass screw** securing **FL inverter board**.
2. Carefully lift up the **FL inverter board** and disconnect the **FL inverter cable** from **CN1** and the **HV cable** from **CN2**.
3. Remove **four mask seals** to expose four screws securing the **LCD module**.
4. Remove **four M2x5 brass screws** securing the **LCD module**.
5. Carefully rotate the **LCD module** from right to left of the LCD cover.
6. Disconnect the **LCD cable** from the **LCD module** and remove the **LCD** from the computer.

# TOSHIBA

Tough Enough for Today's World.