



REMOVAL AND INSTALLATION

DOOR AREA

1. Remove the trims.

NOTE

- Put on gloves to protect your hands.
- When prying with a flat-tip screwdriver, wrap it with protective tape to prevent damage.
- Take care not to bend or scratch the trim and panels.

2. Installation is the reverse of removal.

NOTE

- Replace any damage clips.
- Apply liquid thread lock to the front seat belt upper anchor bolt before installation.
- Before installing the anchor bolts, make sure there are no twists or kinks in the belts.

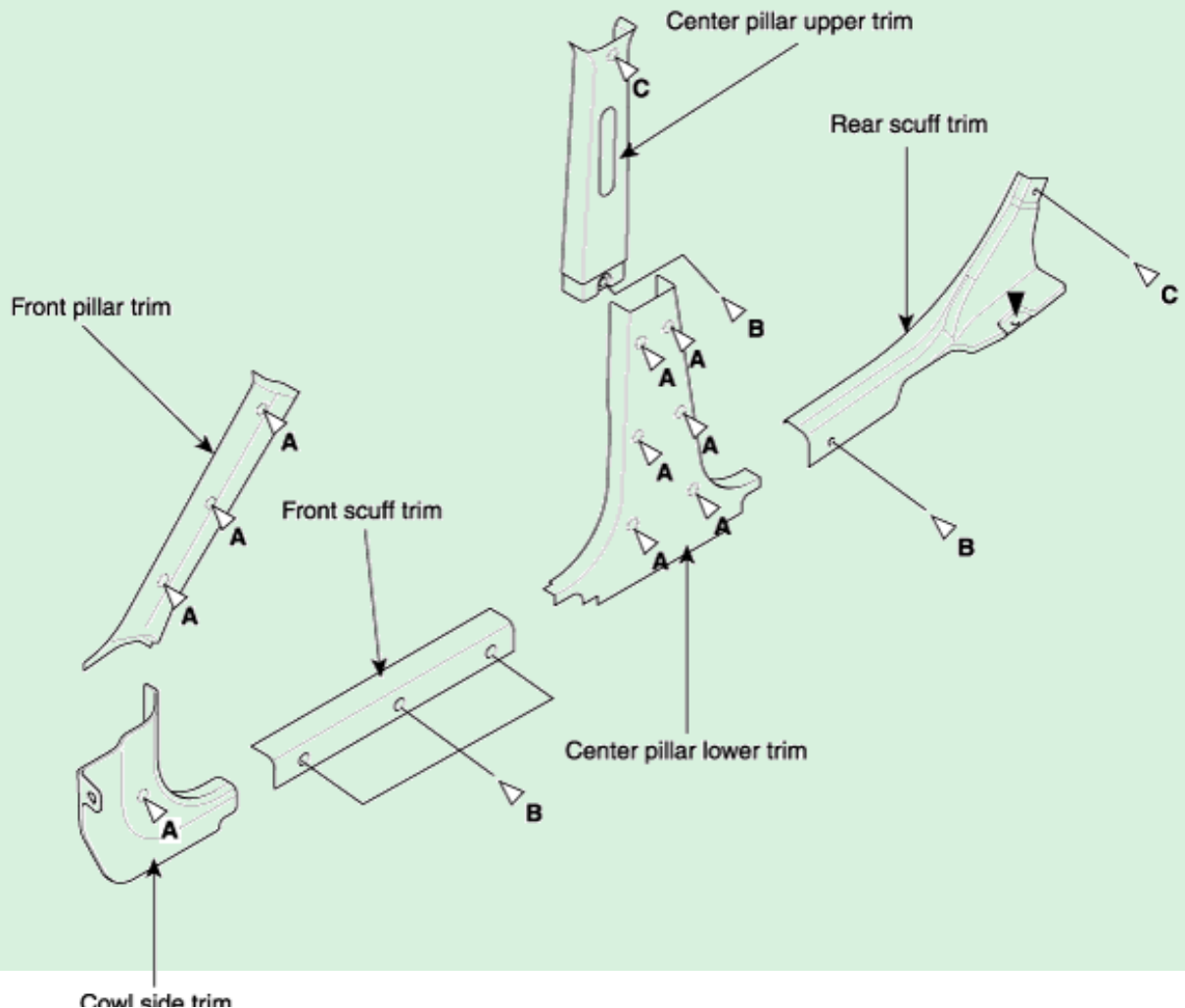
Fastener Locations

▶ : Screw, 1

A ▷ : Clip, 10

B ▷ : Clip, 5

C ▷ : Clip, 2



Cowl side trim

REAR SHELF AREA

1. Remove the trims.

NOTE

- Put on gloves to protect your hands.
- When prying with a flat-tip screwdriver, wrap it protective tape to prevent damage.
- Take care not to bend or scratch the trim and panels.

2. Installation is the reverse of removal.

NOTE

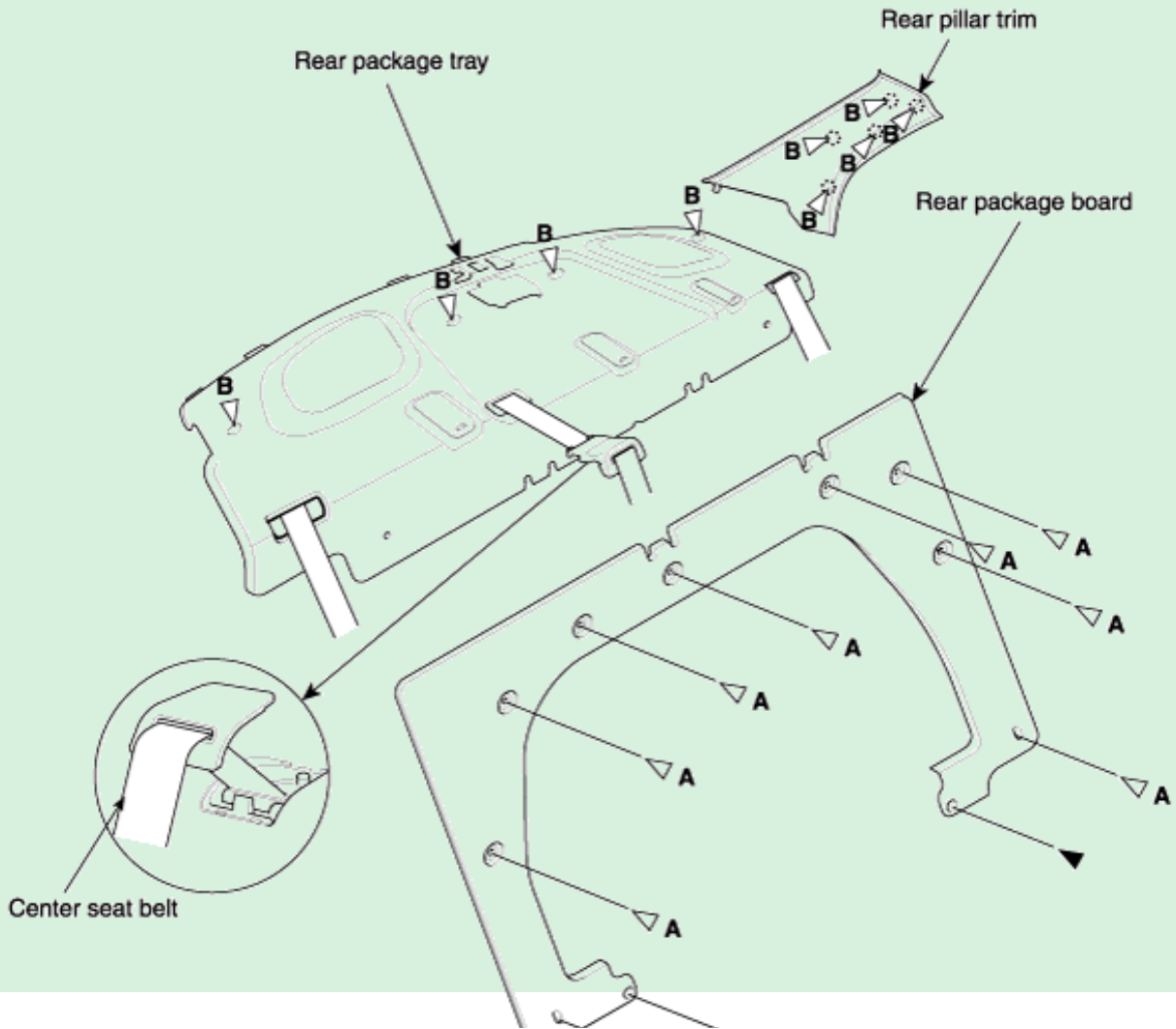
- Replace any damage clips.
- Apply liquid thread lock to the front seat belt upper anchor bolt before installation.
- Before installing the anchor bolts, make sure there are not twists or kinks in the belts.

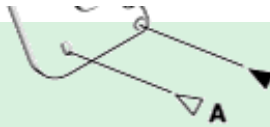
Fastener Locations

► : Screw, 2

A ▷ : Clip, 9

B ▷ : Clip, 9





TRUNK AREA

1. Remove the trims.

NOTE

- Put on gloves to protect your hands.
- When prying with a flat-tip screwdriver, wrap it protective tape to prevent damage.
- Take care not to bend or scratch the trim and panels.

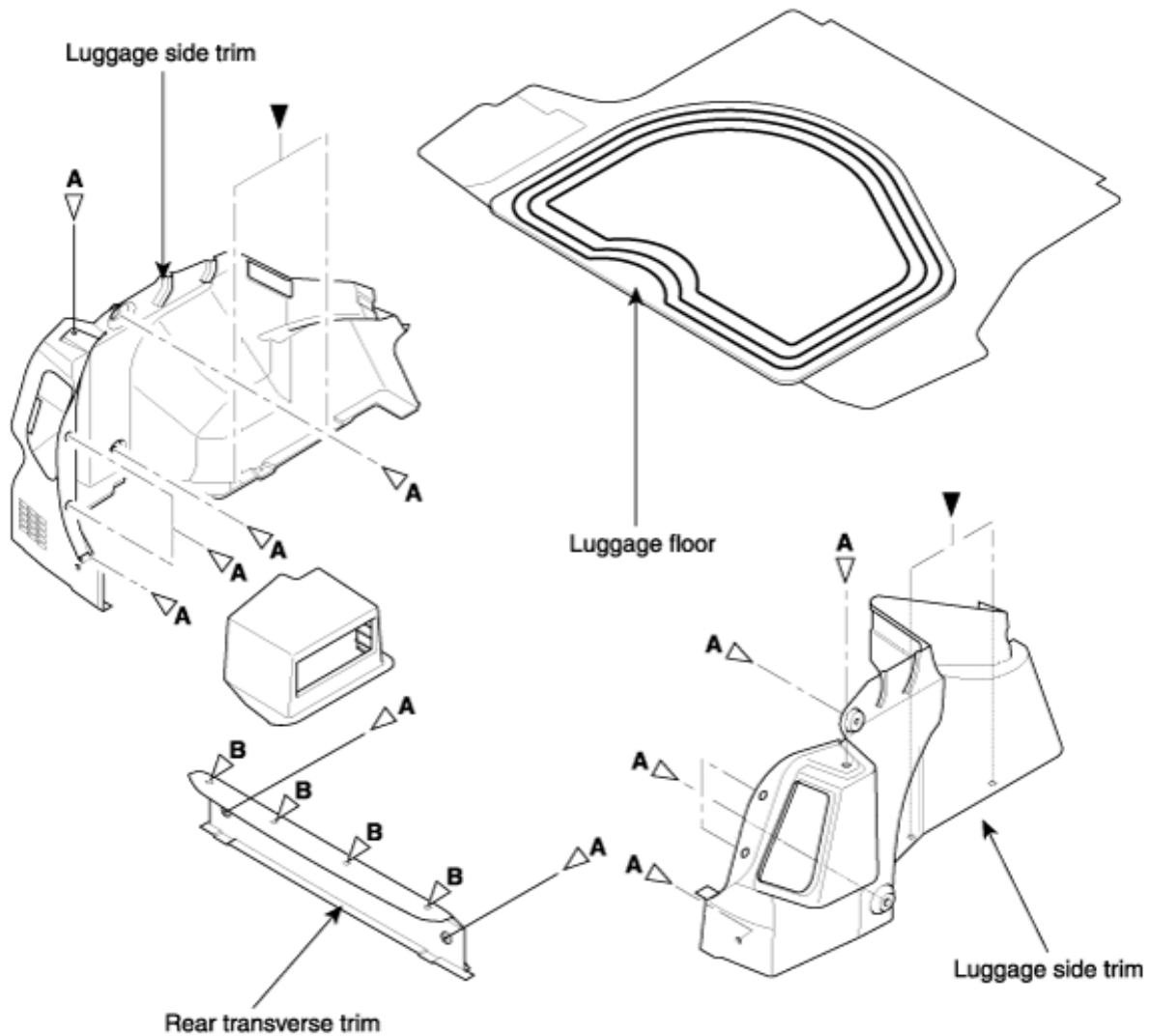
2. Installation is the reverse of removal, and replace any damaged clips.

Fastener Locations

▶ : Screw, 4

A ▷ : Clip, 14

B ▷ : Clip, 4

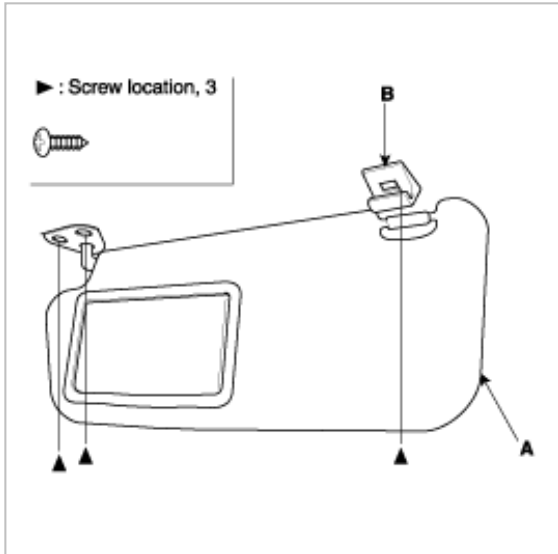


HEADLINER REMOVAL AND INSTALLATION

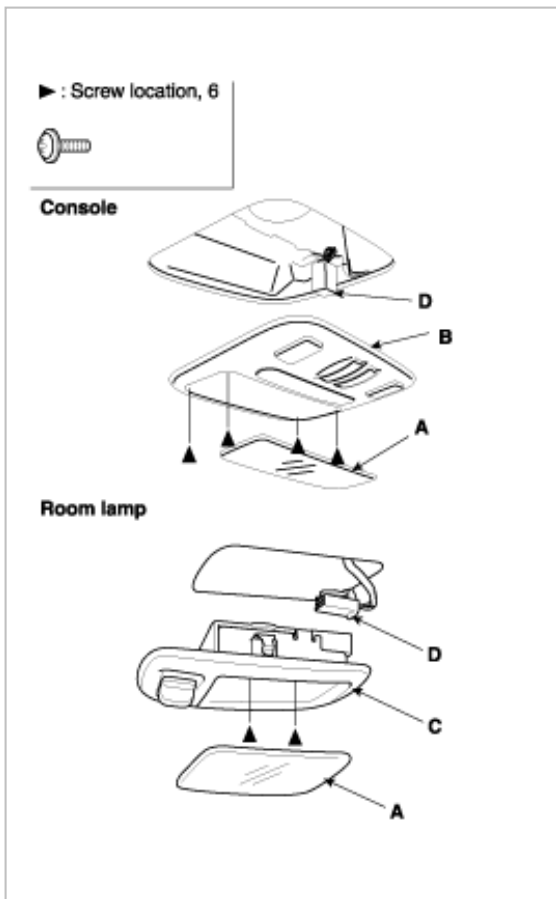
NOTE

- When prying with a flat-tip screwdriver, wrap it protective tape to prevent damage.
- Take care not to bend and scratch the headliner.
- Be careful not to damage the dashboard and other interior trim.

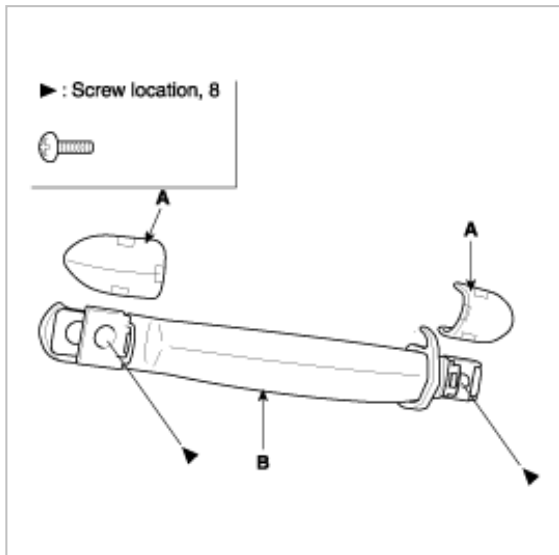
1. Remove the following items (see page BD- 63).
 - A. Front pillar trim (both sides)
 - B. Front seat belt upper anchor bolt (both sides)
 - C. Front and rear scuff trim (see page BD-).
 - D. Center pillar lower and upper trim (see page BD-).
 - E. Rear pillar trim (see page BD-).
2. Remove the sunvisor (A) and holder (B) from each side.



3. Remove the overhead console and room lamp.
 - A. Remove the lens (A).
 - B. Remove the screws.
 - C. Pull out the roof console (B), and room lamp (C).
 - D. Disconnect the connector (D).



4. Remove the caps (A), and remove the screws and washers, then remove the grab handles (B) (drivers and each passengers)

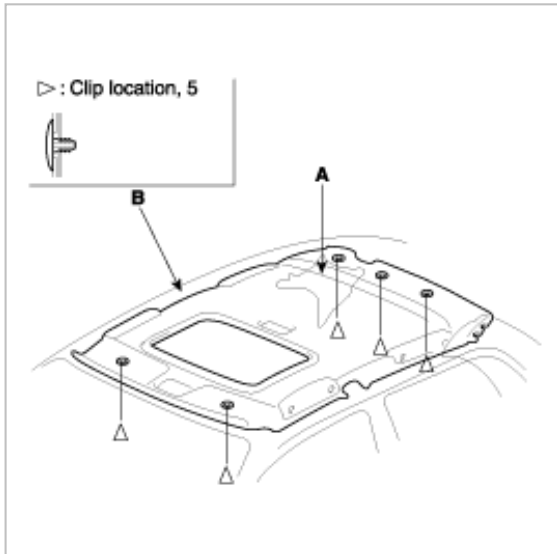


5. Remove the headliner.

A. Remove the upper portion of the rear pillar trim (A) from each side.

B. With help of an assistant, detach the clips, and lower the headliner (B).

C. Remove the headliner through the front passengers door opening.



6. Installation is the reverse of removal.

NOTE

- When reinstalling the headliner through the door opening, be careful not to fold or bend it. Also, be careful not to scratch the body.
- If the threads on a visor or grab handle screws are worn out, use an oversized screw made specifically for this application.
- Check that both sides of the headliner are securely attached to the trim.

CARPET REPLACEMENT

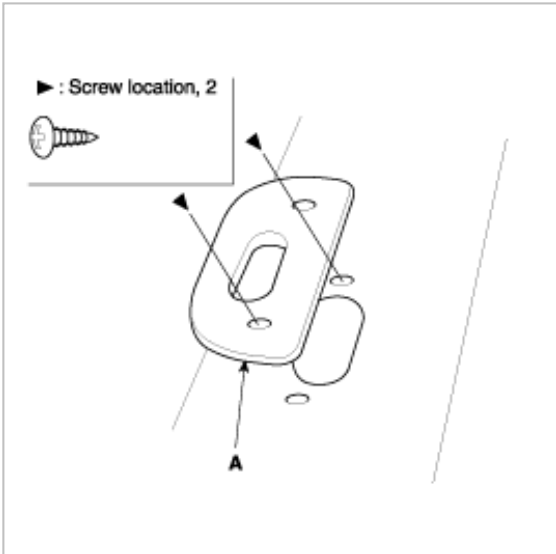
NOTE

- Put on gloves to protect you hands.
- Take care not to damage, wrinkle or twist the carpet.
- Be careful not to damage the dashboard or other interior trim pieces.

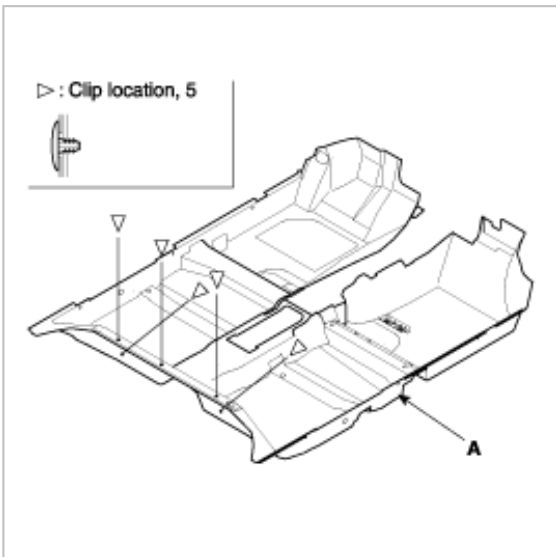
1. Remove the following items:

- Front seats, both sides (see page BD- 84).
- Console (see page BD- 53).
- Rear seat cushion (see page BD- 89).
- Front seat belt anchor bolt, both sides (see page BD- 96).
- Front door scuff trim (see page BD- 63).
- Rear door scuff trim (see page BD- 63).
- Center pillar lower trim panel (see page BD- 63).

2. Remove the footrest (A).



3. Remove the clips and fasteners, then remove the carpet (A). Put on gloves to protect your hands.



4. Installation is the reverse of removal.

NOTE

- Take care not to damage, wrinkle or twist the carpet.
- Make sure the seat harness is routed correctly.
- Replace any damaged clips.