



TROUBLESHOOTING

INSTRUMENTS AND WARNING SYSTEM

Symptom	Possible cause	Remedy	See page
Speedometer does not operate	No.25 fuse (15A) blown Speedometer faulty Vehicle speed sensor faulty Wiring or ground faulty	Check for short and replace fuse Check speedometer Check vehicle speed sensor Repair if necessary	BE-89 BE-99 BE-99
Tachometer does not operate	No.2 fuse (10A) blown Tachometer faulty Wiring or ground faulty	Check for short and replace fuse Check tachometer Repair if necessary	BE-89 BE-100
Fuel gauge does not operate	No.2 fuse (10A) blown Fuel gauge faulty Fuel sender faulty Wiring or ground faulty	Check for short and replace fuse Check gauge Check fuel sender Repair if necessary	BE-89 BE-100 BE-100
Low fuel warning lamp does not light up	No.2 fuse (10A) blown Bulb burned out Fuel sender faulty Wiring or ground faulty	Check for short and replace fuse Replace bulb Check fuel sender Repair if necessary	BE-89 BE-100
Water temperature gauge does not operate	No.2 fuse (10A) blown Water temperature gauge faulty Water temperature sender faulty Wiring or ground faulty	Check for short and replace fuse Check gauge Check sender Repair if necessary	BE-89 BE-101 BE-101
Oil pressure warning lamp does not light up	No.2 fuse (10A) blown Bulb burned out Oil pressure switch faulty Wiring or ground faulty	Check for short and replace fuse Replace bulb Check switch Repair if necessary	BE-89 BE-101
Low brake fluid warning lamp does not light up	No.2 fuse (10A) blown Bulb burned out Brake fluid level warning switch faulty Parking brake switch faulty Wiring or ground faulty	Check for short and replace fuse Replace bulb Check switch Check switch Repair if necessary	BE-89 BE-102 BE-102
Open door warning lamp and trunk lid warning lamp do not light up	No.25 fuse (15A) blown Bulb burned out Door switch faulty Trunk room lamp switch (4 door) faulty Tailgate switch (5 door) faulty Wiring or ground faulty	Check for short and replace fuse Replace bulb Check switch Check switch Check switch Repair if necessary	BE-89 BE-103 BE-70 BE-71

Seat belt warning lamp does not light up	No.2 fuse (10A) blown Bulb burned out Seat belt switch faulty Wiring or ground faulty	Check for short and replace fuse Replace bulb Check switch Repair if necessary	BE-89 BE-103
All illumination lights do not light up	Battery fusible link (50A) blown Tail lamp relay faulty No.6, No.7 fuse (10A) blown Rheostat faulty Wiring or ground faulty	Replace the fusible link Check relay Check for short and replace fuse Check rheostat Repair if necessary	BE-86 BE-92 BE-89

LIGHTING SYSTEM

Symptom	Possible cause	Remedy	See page
One lamp does not light (all exterior)	Bulb burned out Socket, wiring or ground faulty	Replace bulb Repair if necessary	BE-144
Head lamps do not light	Bulb burned out No.20 fuse (10A) blown Head lamp fuse (15A) blown Head lamp relay faulty Lighting switch faulty Wiring or ground faulty	Replace bulb Check for short and replace fuse Check for short and replace fuse Check relay Check switch Repair if necessary	BE-144 BE-89 BE-86 BE-147 BE-55
Tail lamps and license plate lamps do not light	Bulb burned out No.6, No.7 fuse (10A) blown Battery fusible link (50A) blown Tail lamp relay faulty ETACS module faulty Lighting switch faulty Wiring or ground faulty	Replace bulb Check for short and replace fuse Replace the fusible link Check relay Check ETACS module Check switch Repair if necessary	BE-155 BE-89 BE-86 BE-92 BE-78 BE-55
Stop lamps do not light	Bulb burned out No.16 fuse (15A) blown Stop lamp switch faulty Wiring or ground faulty	Replace bulb Check for short and replace fuse Adjust or replace switch Repair if necessary	BE-156 BE-89
Instrument lamps do not light (Tail lamps light)	Rheostat faulty Wiring or ground faulty	Check rheostat Repair if necessary	
Turn signal lamp does not flash on one side	Bulb burned out Turn signal switch faulty Wiring or ground faulty	Replace bulb Check switch Repair if necessary	BE-148 BE-55
Turn signal lamps do not light	Bulb burned out No.1 fuse (10A) blown Flasher unit faulty Turn signal switch faulty Wiring or ground faulty	Replace bulb Check for short and replace fuse Check flasher unit Check switch Repair if necessary	BE-148 BE-89 BE-153 BE-55

Hazard warning lamps do not light	Bulb burned out No.4 fuse (10A) blown Flasher unit faulty Hazard switch faulty Hazard relay faulty Wiring or ground faulty	Replace bulb Check for short and replace fuse Check flasher unit Check switch Check relay Repair if necessary	BE-148 BE-89 BE-153 BE-152 BE-152
Flasher rate too slow or too fast	Lamps' wattages are smaller or larger than specified Defective flasher unit	Replace lamps Check flasher unit	BE-148 BE-153
Back up lamps do not light	Bulb burned out No.1 fuse (10A) blown Back up lamp switch(M/T) faulty Transaxle range switch(A/T) faulty Wiring or ground faulty	Replace bulb Check for short and replace fuse Check switch Check switch Repair if necessary	BE-148 BE-89
Front fog lamps do not light	Bulb burned out Front fog lamp fuse (15A) blown Front fog lamp relay faulty Front fog lamp switch faulty Wiring or ground faulty	Replace bulb Check for short and replace fuse Check relay Check switch Repair if necessary	BE-154 BE-86 BE-154 BE-55
Room lamp does not light	Bulb burned out No.25 fuse (15A) blown Room lamp switch faulty Door switch faulty ETACS module faulty Wiring or ground faulty	Replace bulb Check for short and replace fuse Check switch Check switch Check ETACS module Repair if necessary	BE-149 BE-89 BE-149 BE-103 BE-78
Map lamp does not light	Bulb burned out No.25 fuse (15A) blown Map lamp switch faulty Wiring or ground faulty	Replace bulb Check for short and replace fuse Check switch Repair if necessary	BE-150 BE-89 BE-150
Trunk room lamp does not light	Bulb burned out No.25 fuse (15A) blown Trunk room lamp switch(4door) faulty Tailgate switch (5 door) faulty Wiring or ground faulty	Replace bulb Check for short and replace fuse Check switch Check switch Repair if necessary	BE-158 BE-89 BE-158 BE-71

AUDIO

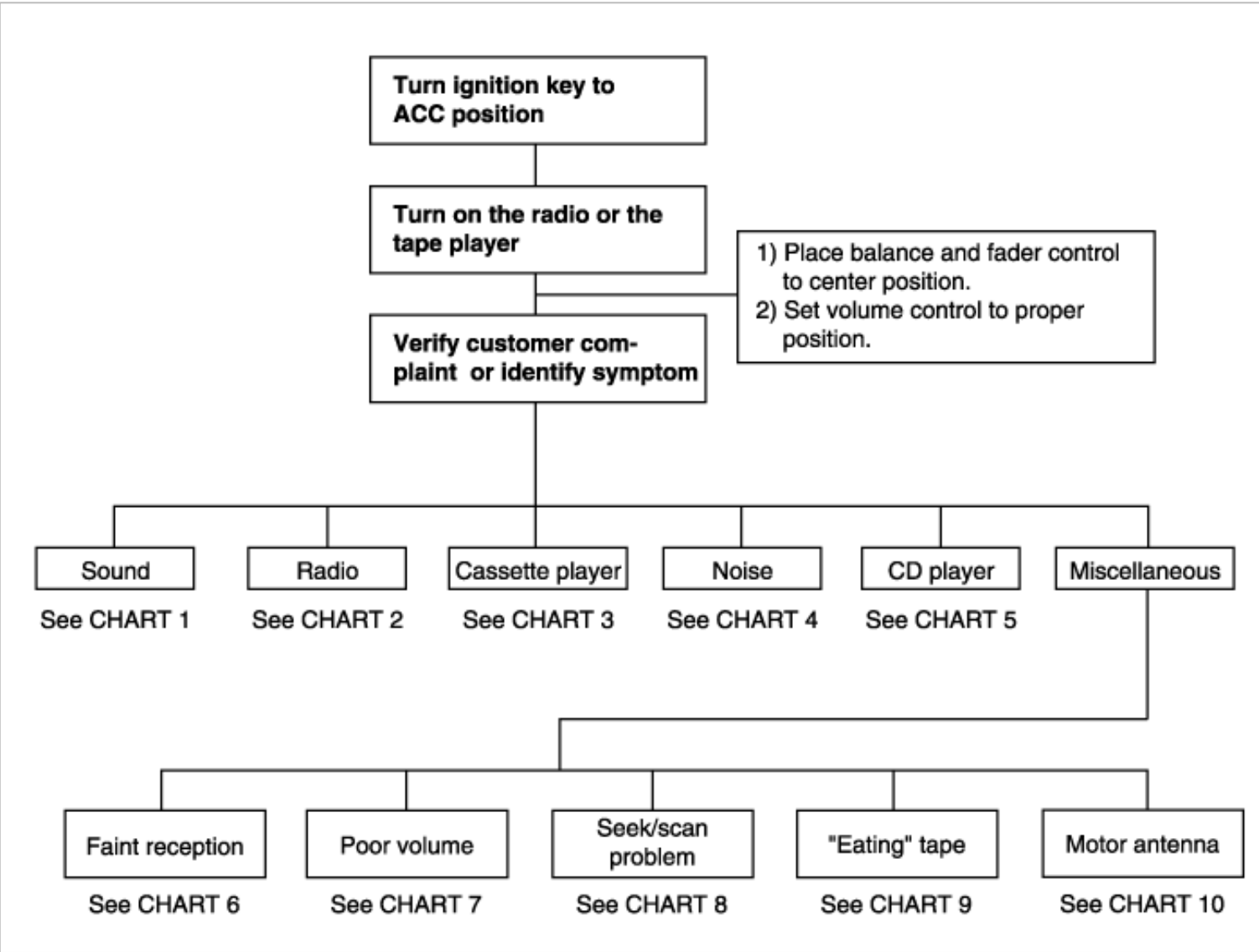
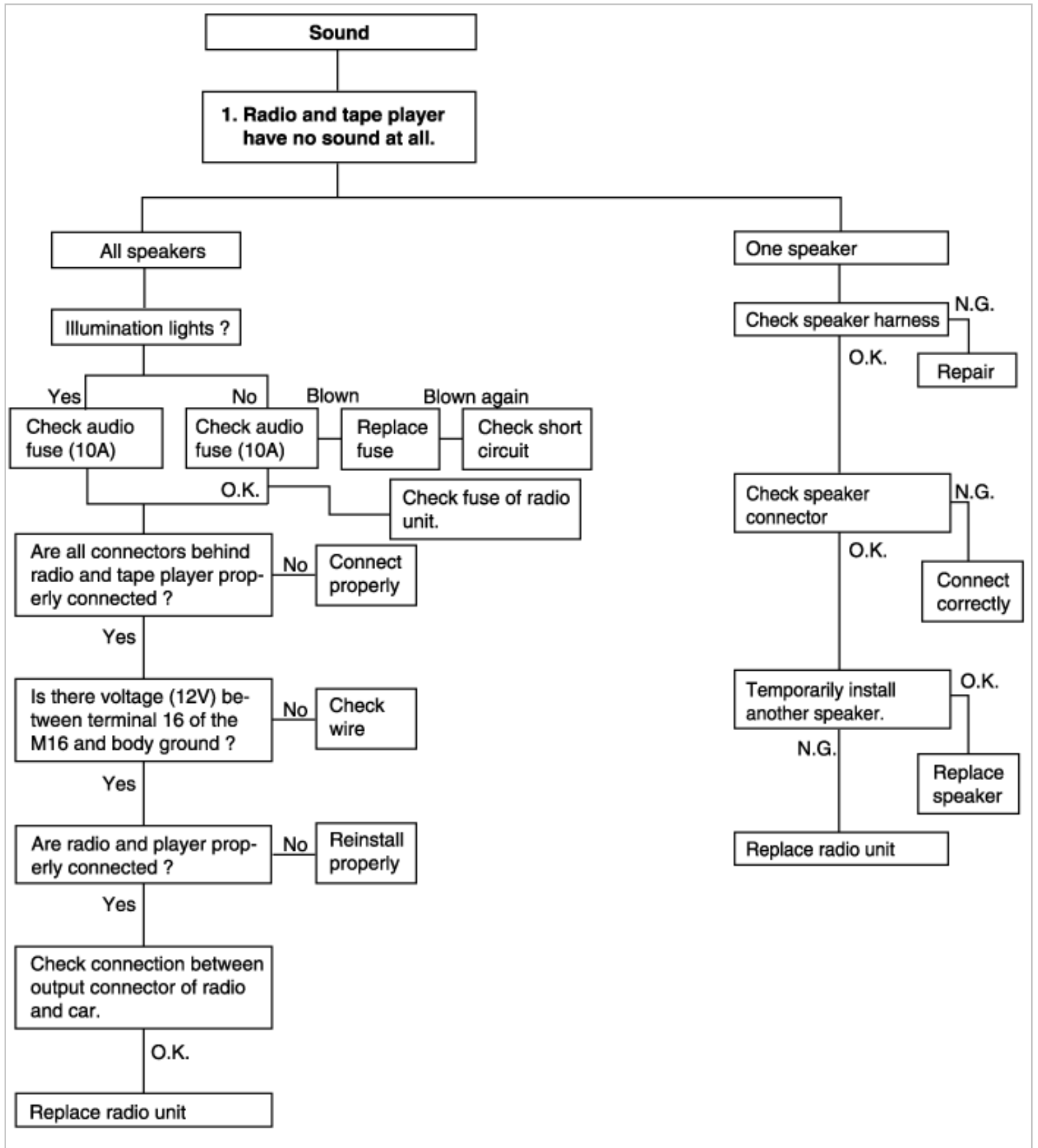


CHART 1



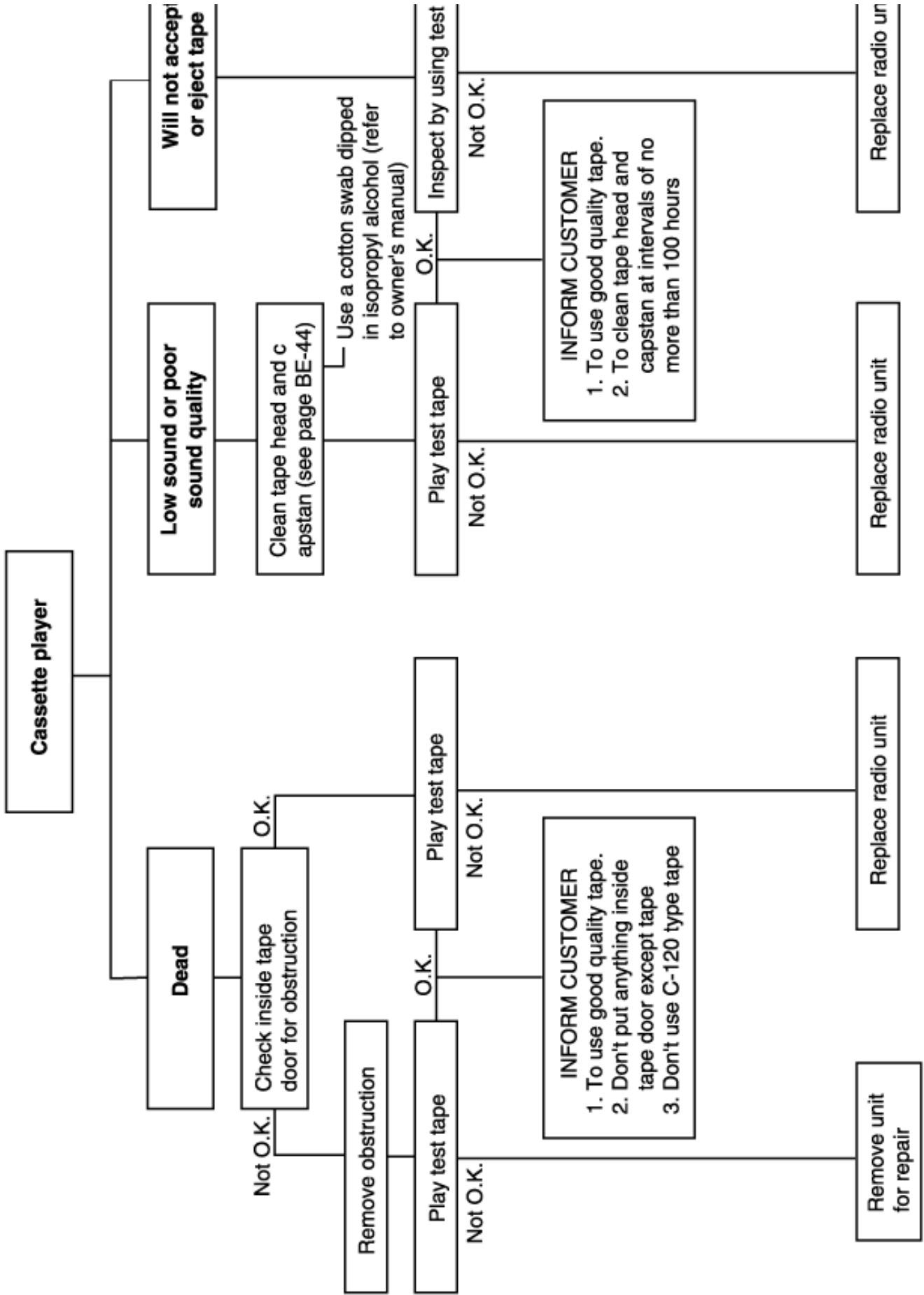
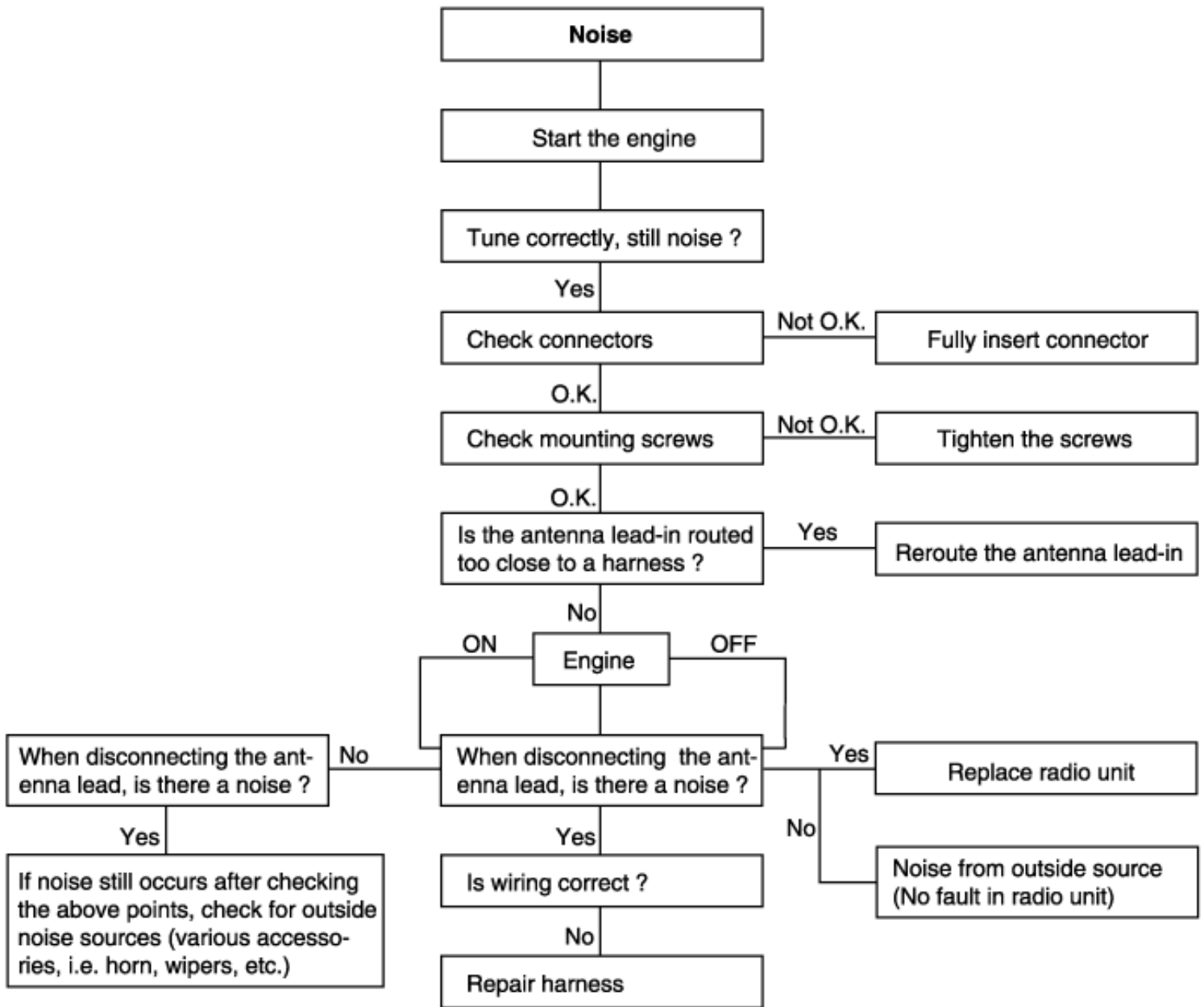


CHART 4

1. RADIO



2. TAPE

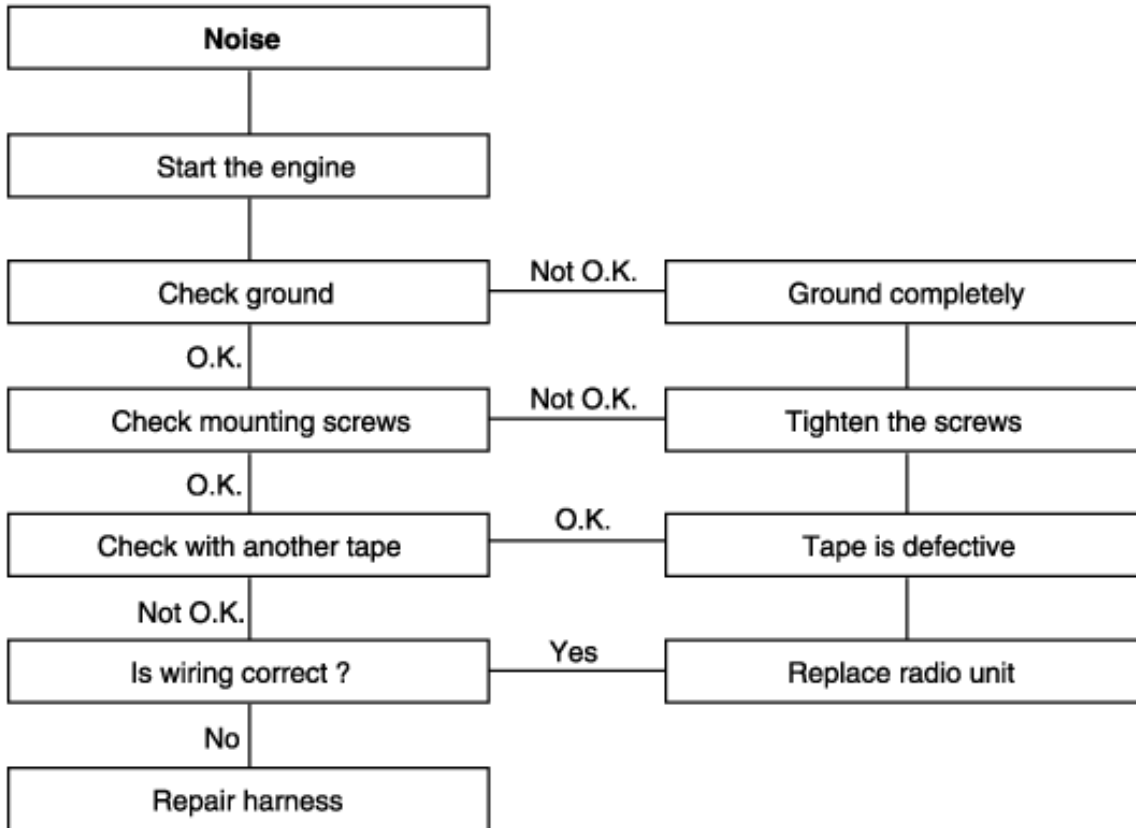
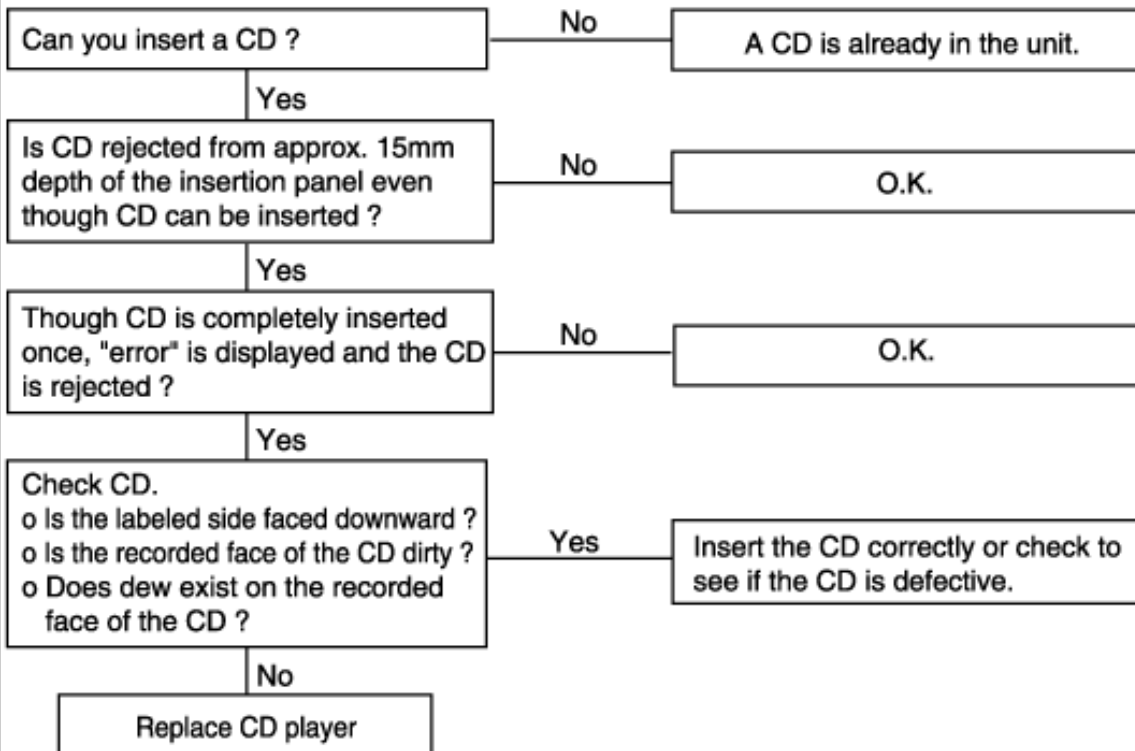
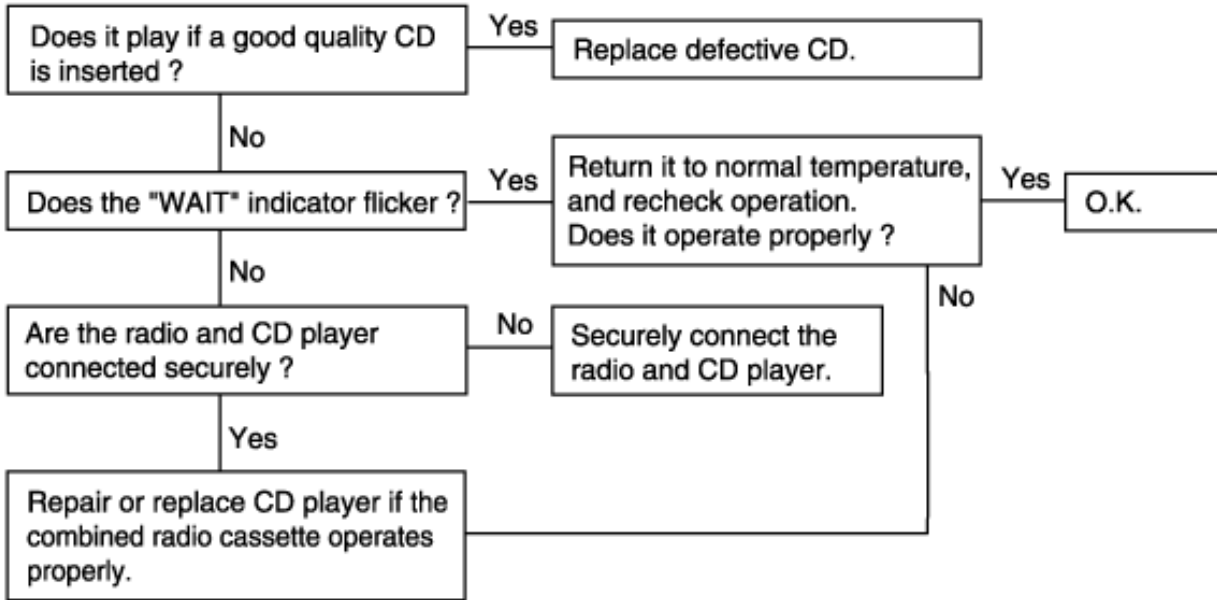


CHART 5

1. CD WILL NOT BE ACCEPTED

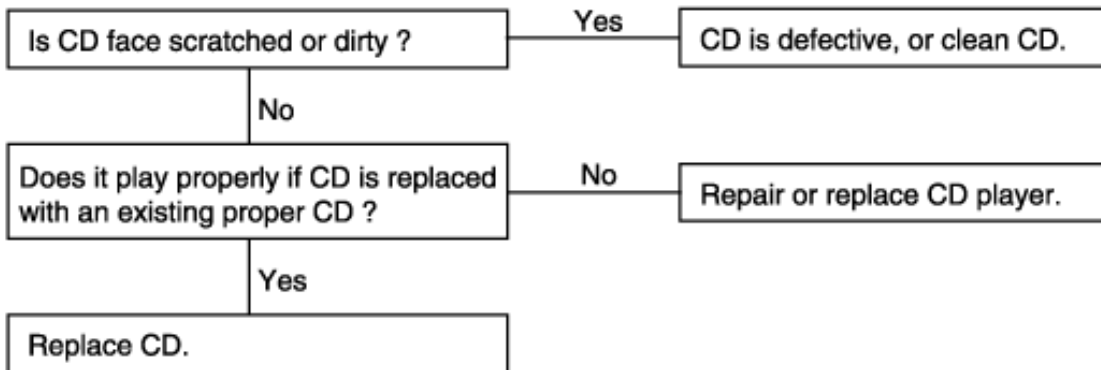


2. NO SOUND



3. CD SOUND SKIPS

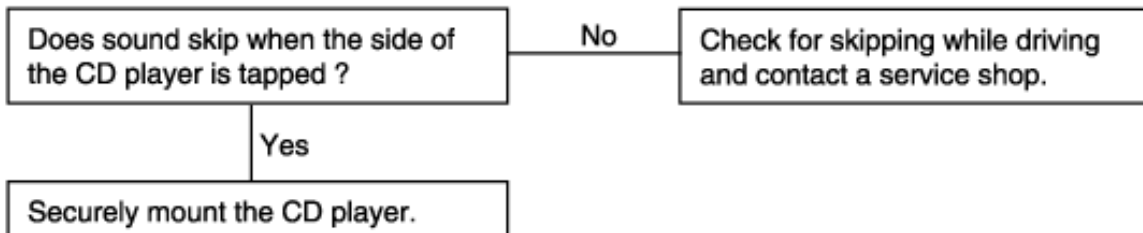
1) Sound sometimes skips when parking.



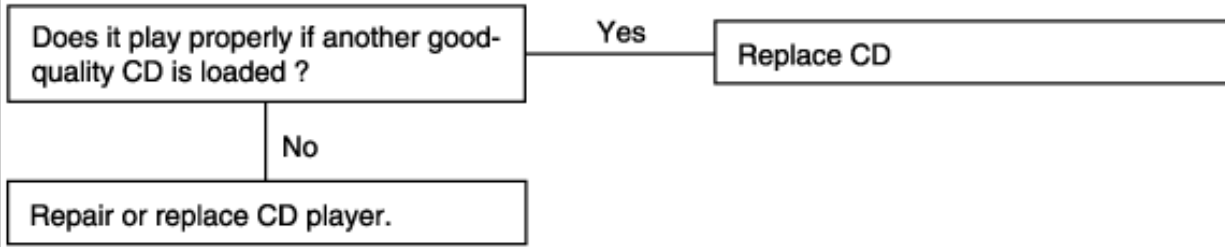
2) Sound sometimes skips when driving.

(Stop vehicle, and check it.)

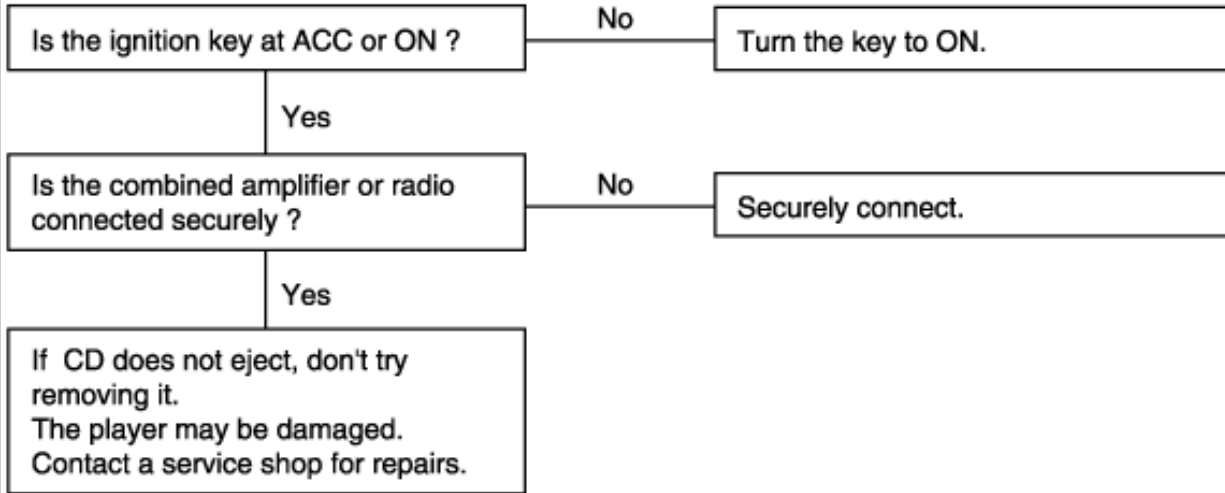
(Check by using a CD which is free of scratches, dirt or other damage.)



4. SOUND QUALITY IS POOR



5. CD WILL NOT EJECT



6. NO SOUND FROM ONE SPEAKER

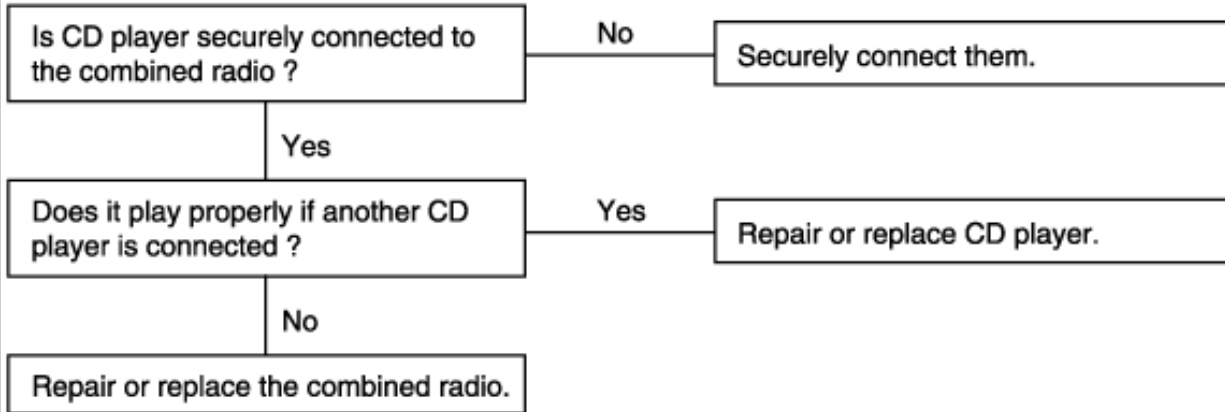


CHART 6 (IF MOTOR ANTENNA INSTALLED)

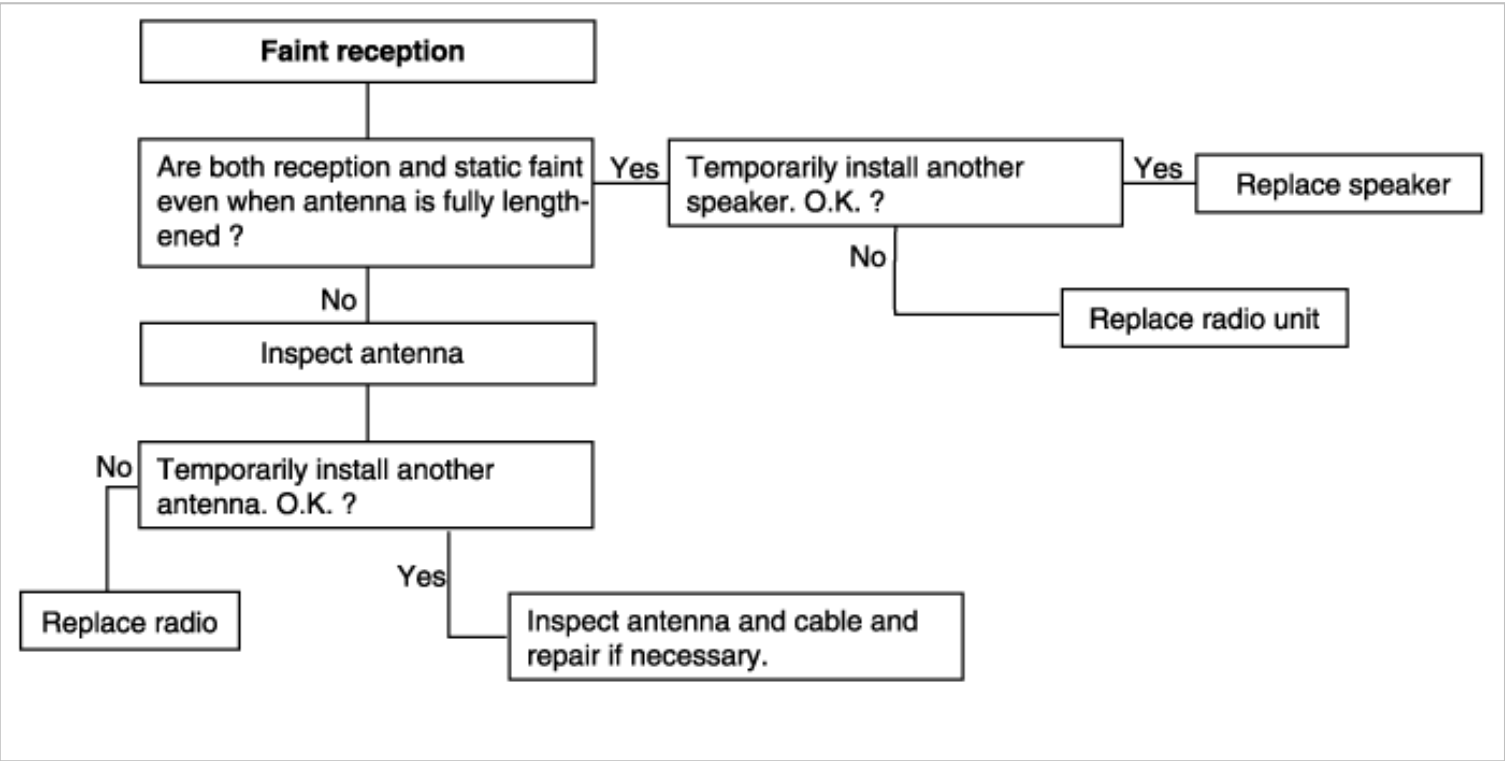
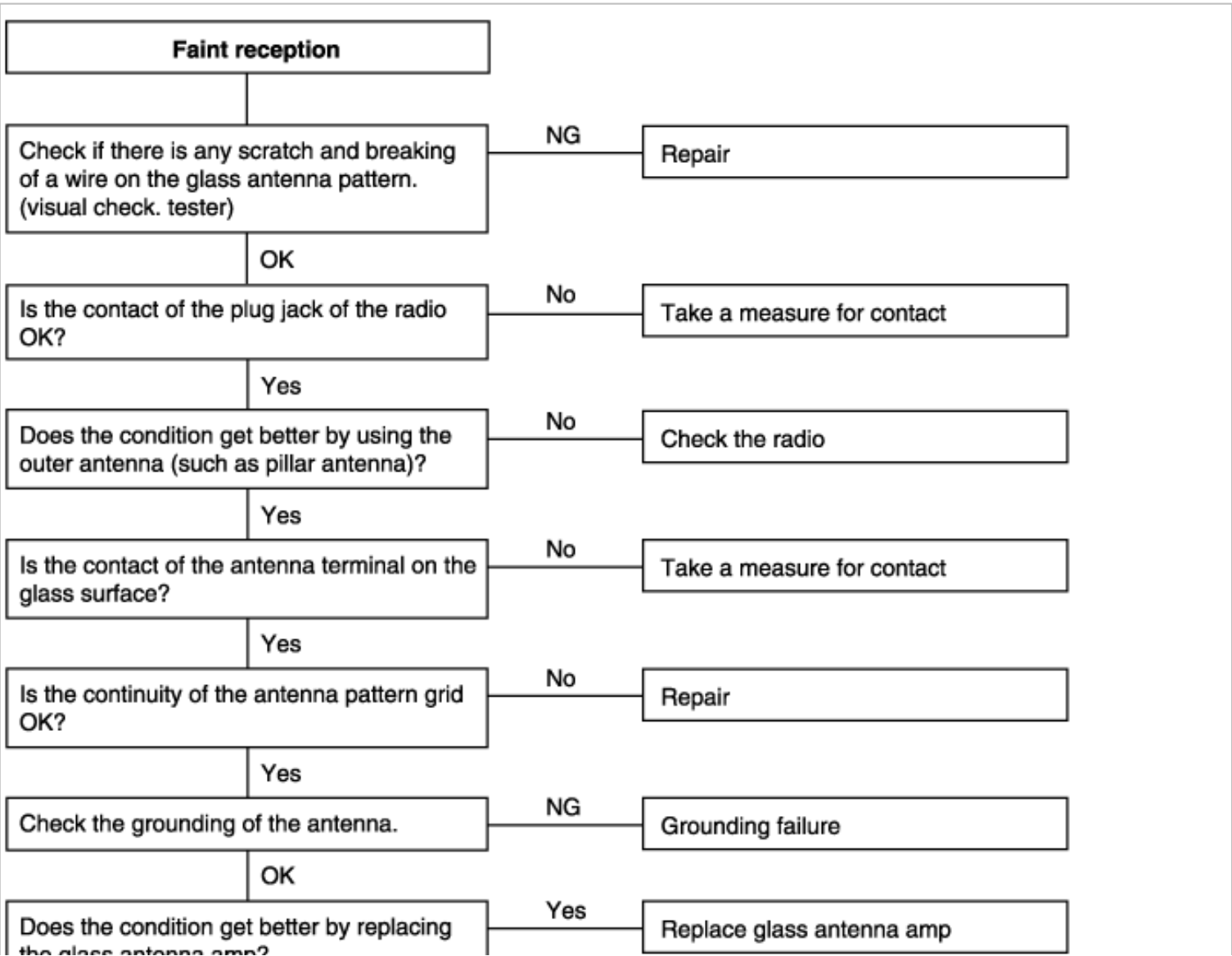


CHART 6 (IF GLASS ANTENNA INSTALLED)



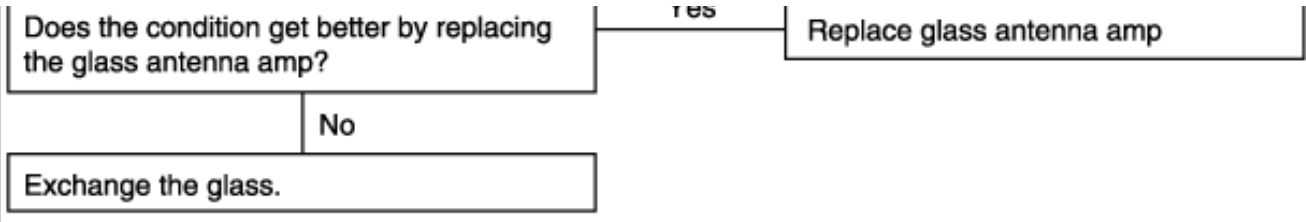


CHART 7

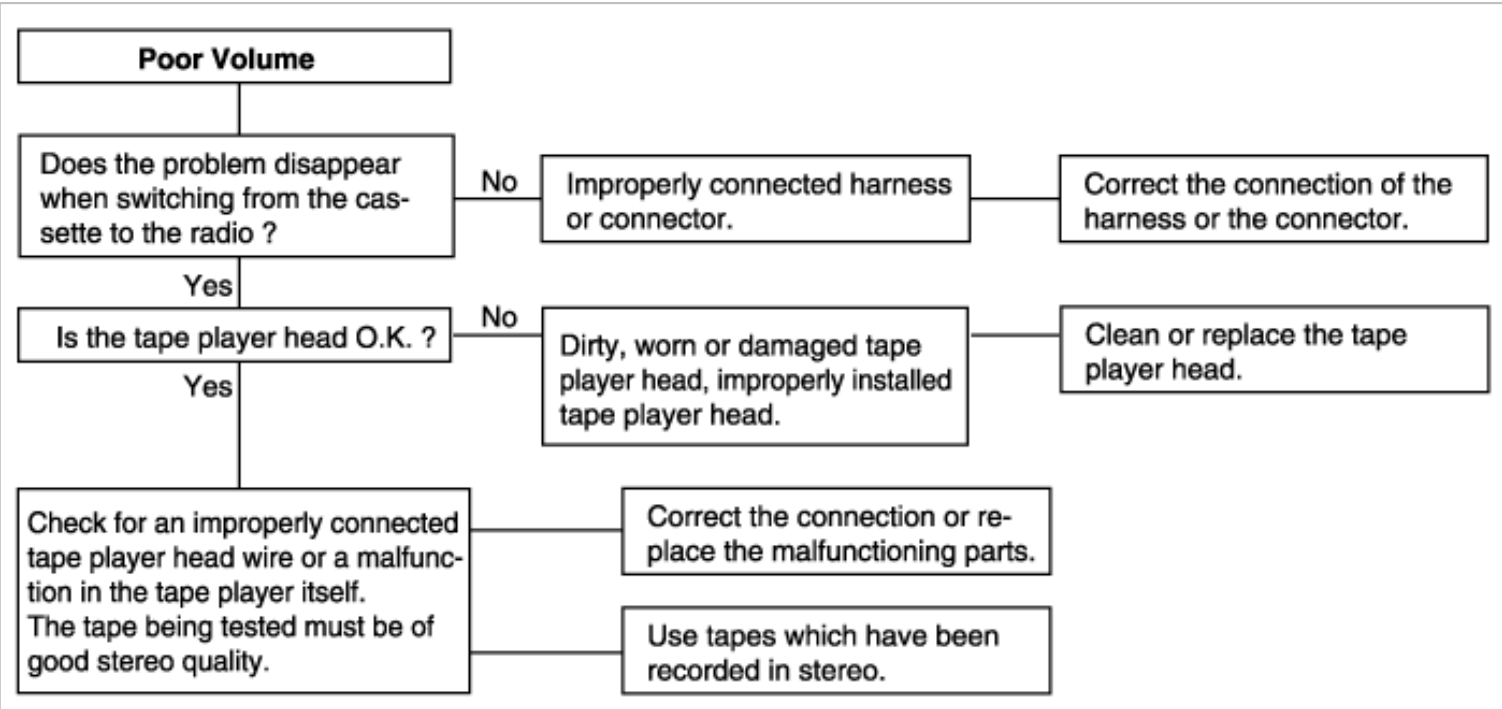


CHART 8

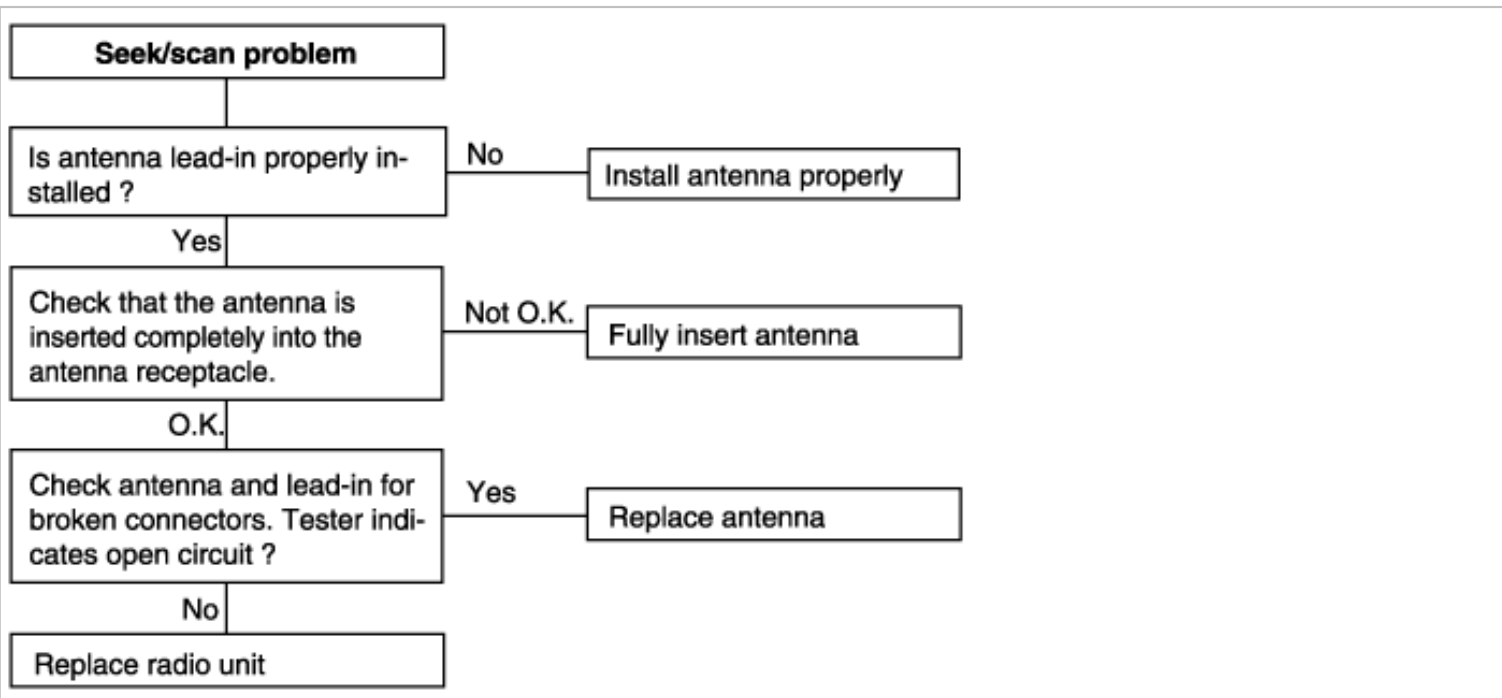


CHART 9

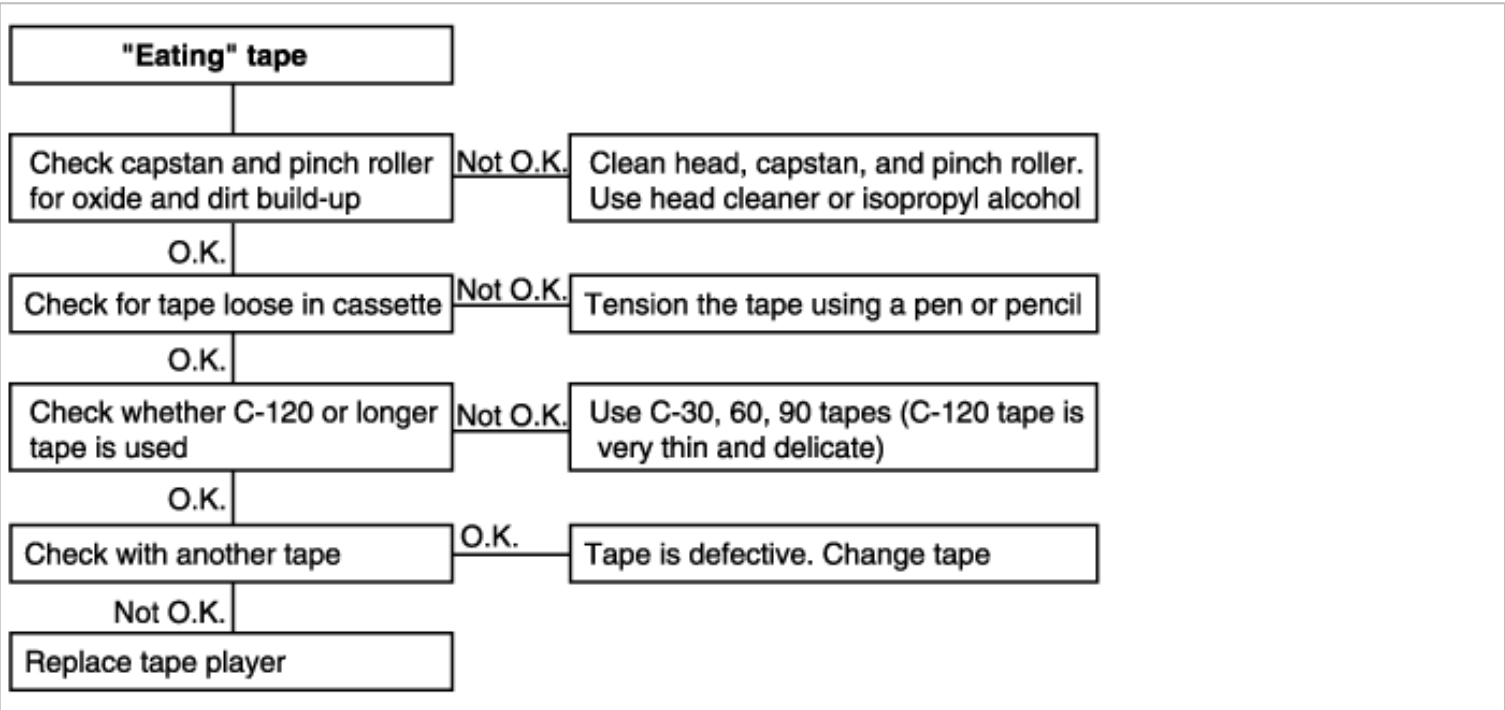
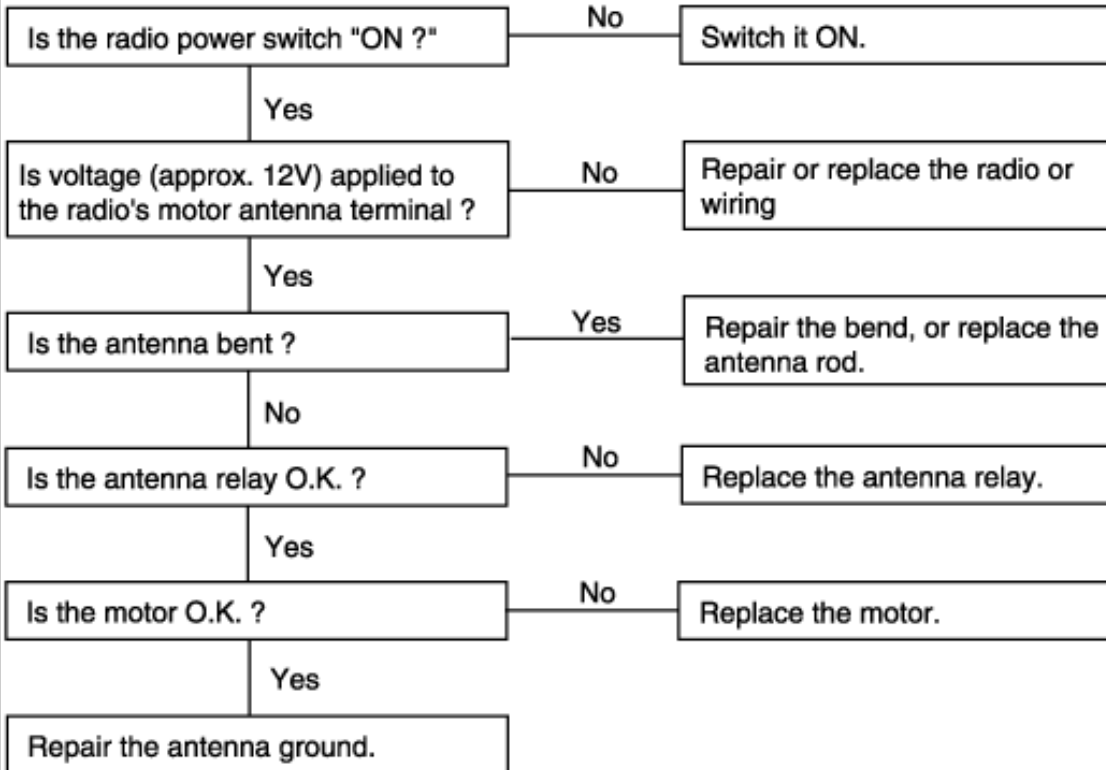


CHART 10

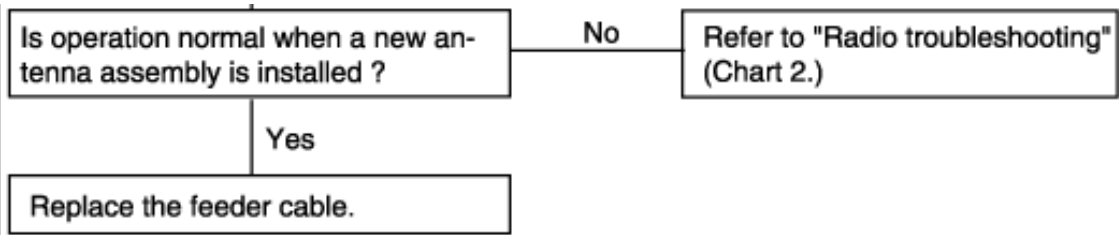
1. MOTOR ANTENNA WON'T EXTEND OR RETRACT

Clean and polish the surface of the antenna rod.



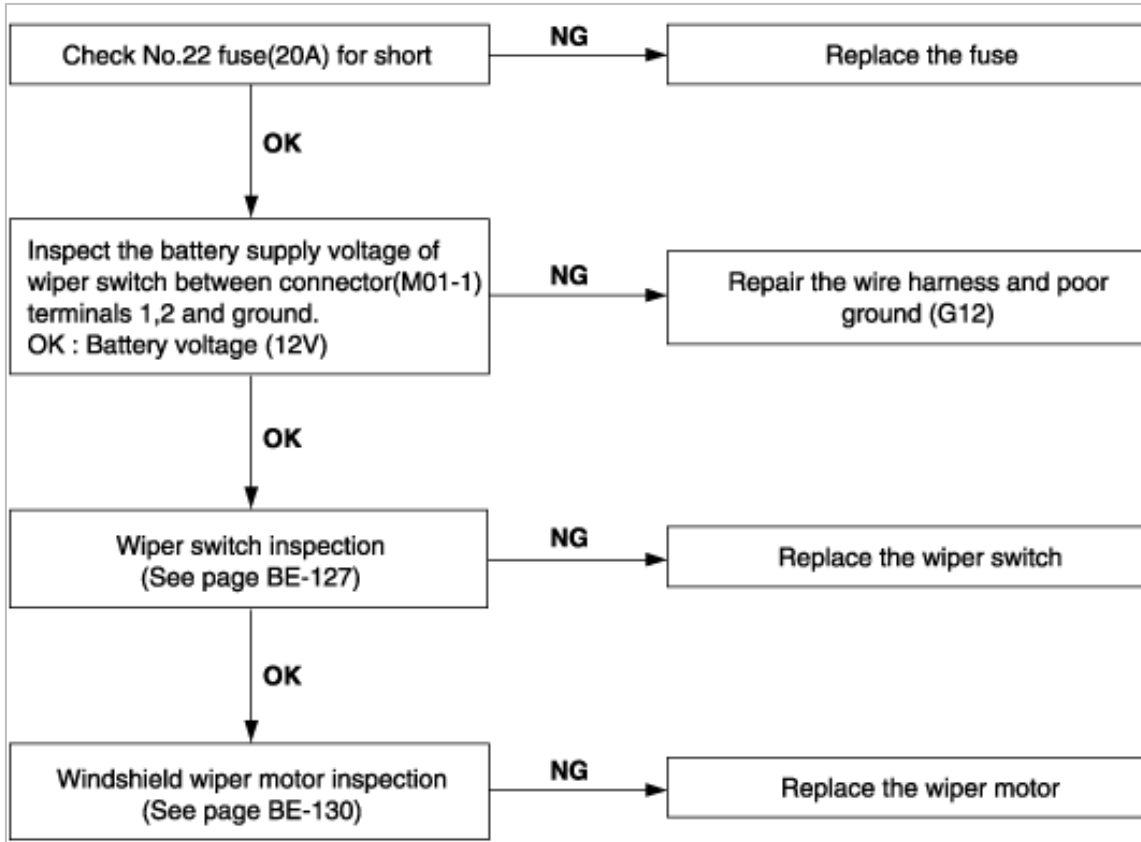
2. MOTOR ANTENNA EXTENDS AND RETRACTS BUT DOES NOT RECEIVE



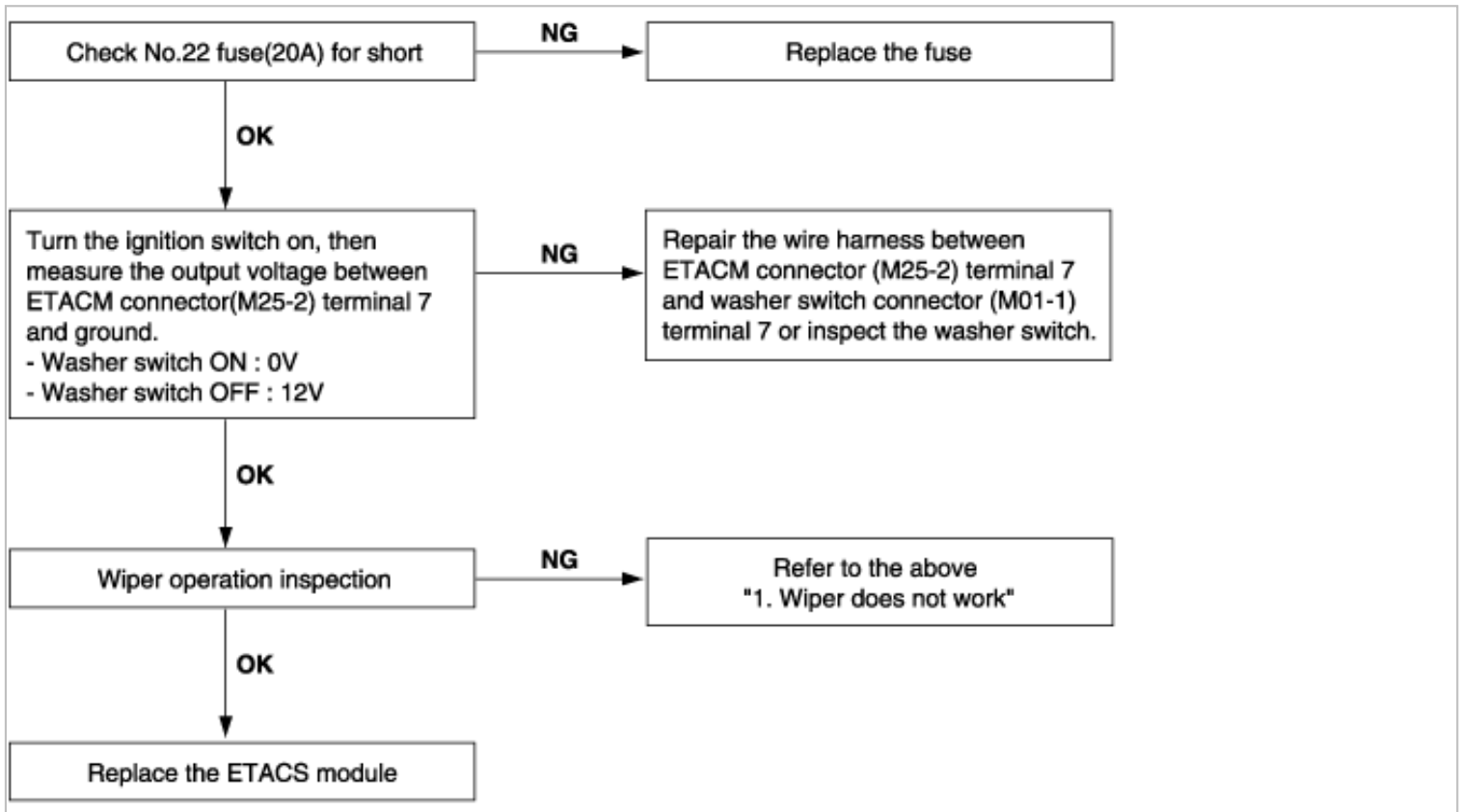


WINDSHIELD WIPER

1. Wiper low and wiper high does not work.

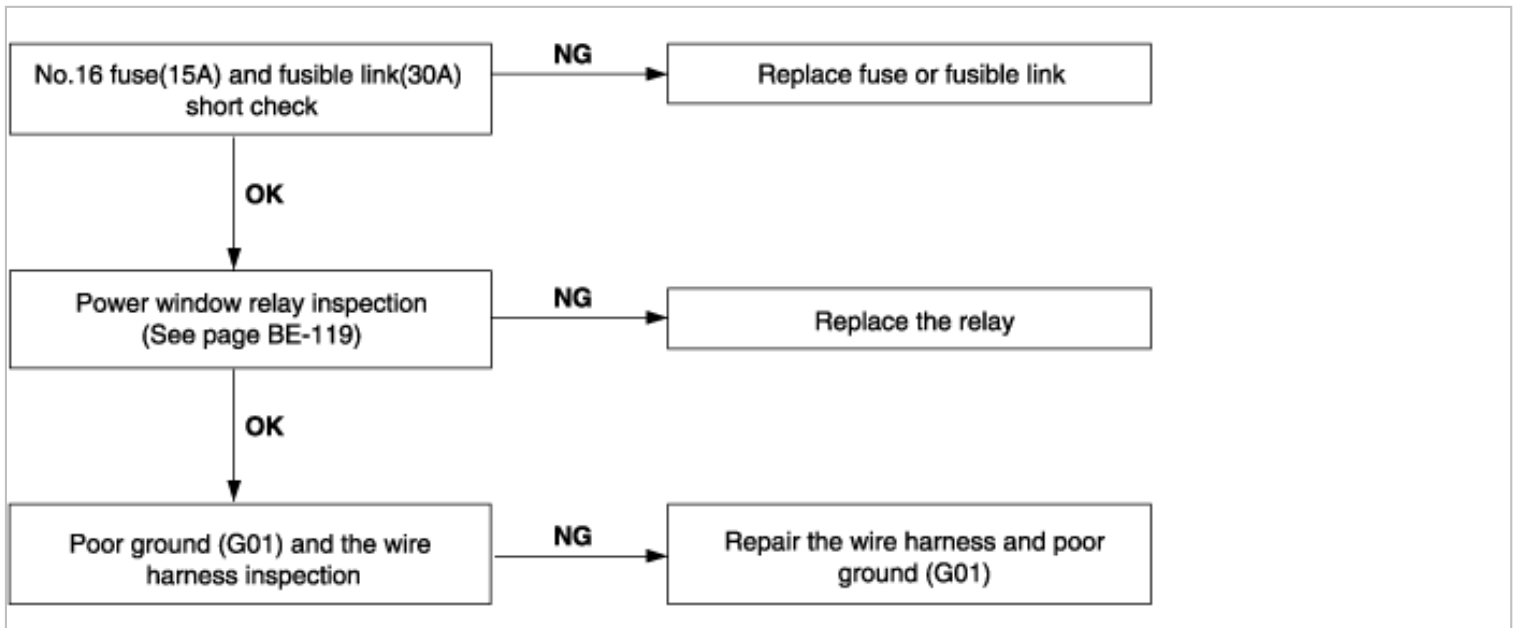


2. When washer switch is on, wiper does not work.

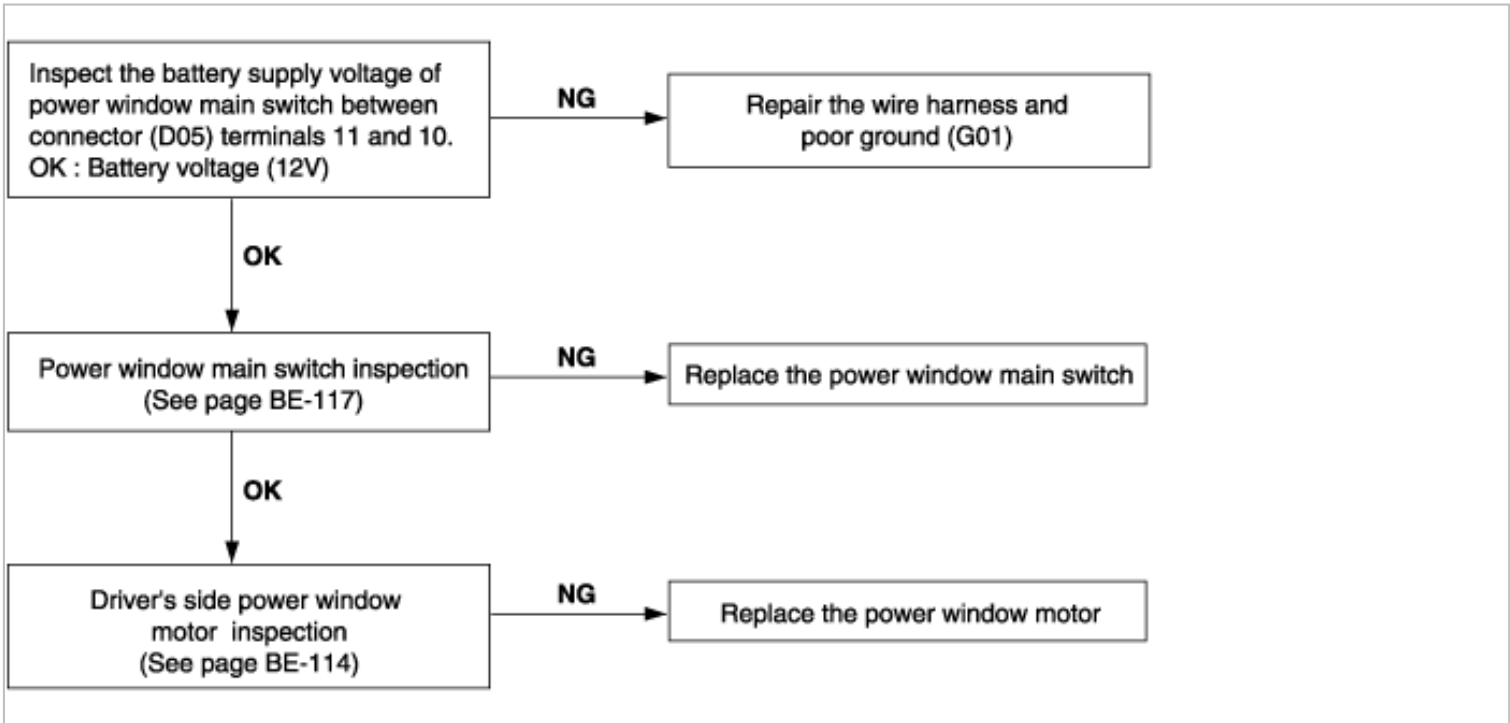


POWER WINDOW

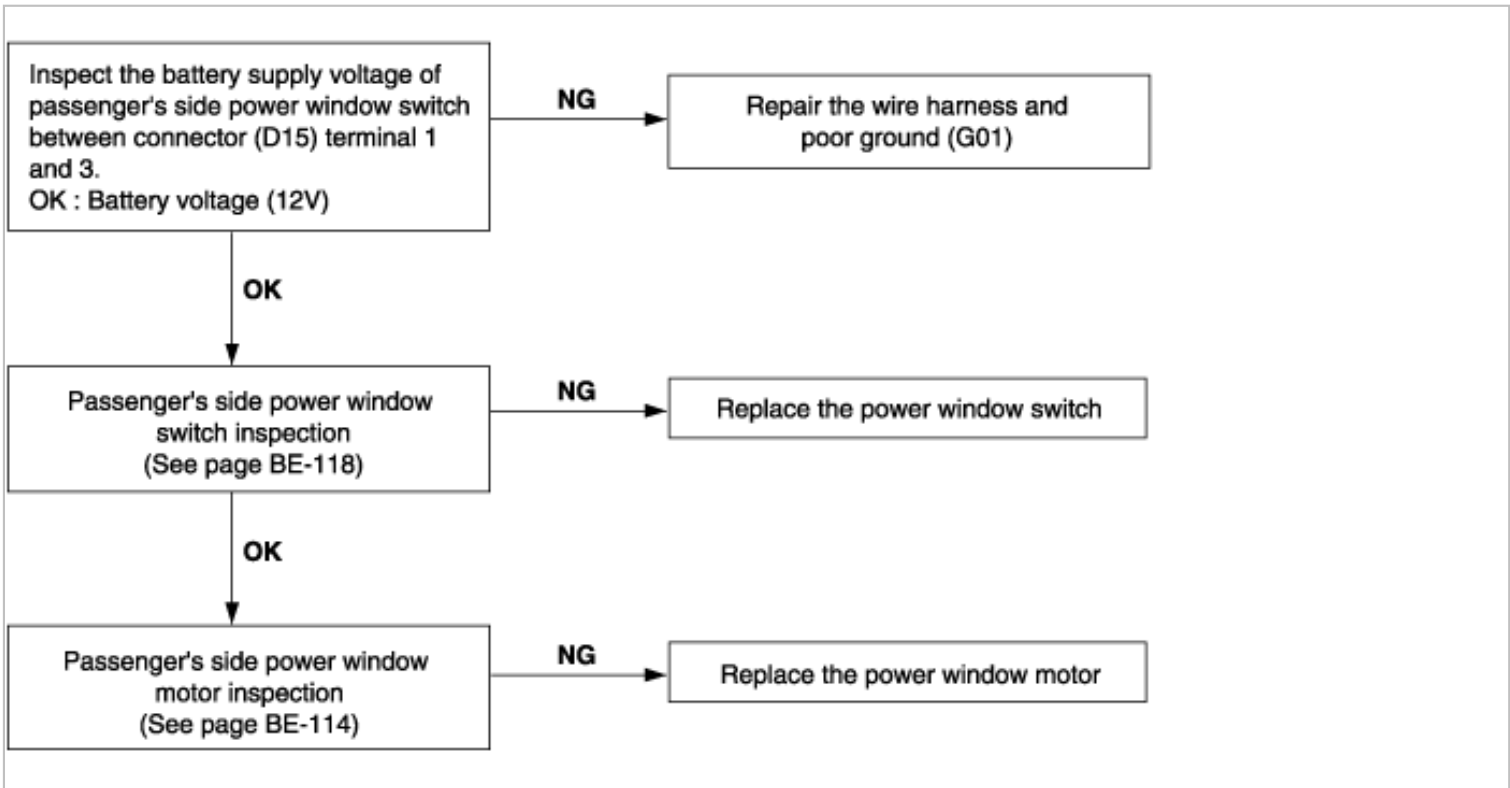
1. No windows operate from the main switch on the driver's door.



2. Driver's side window does not operate.



3. Passenger's side window does not operate.



POWER DOOR LOCK

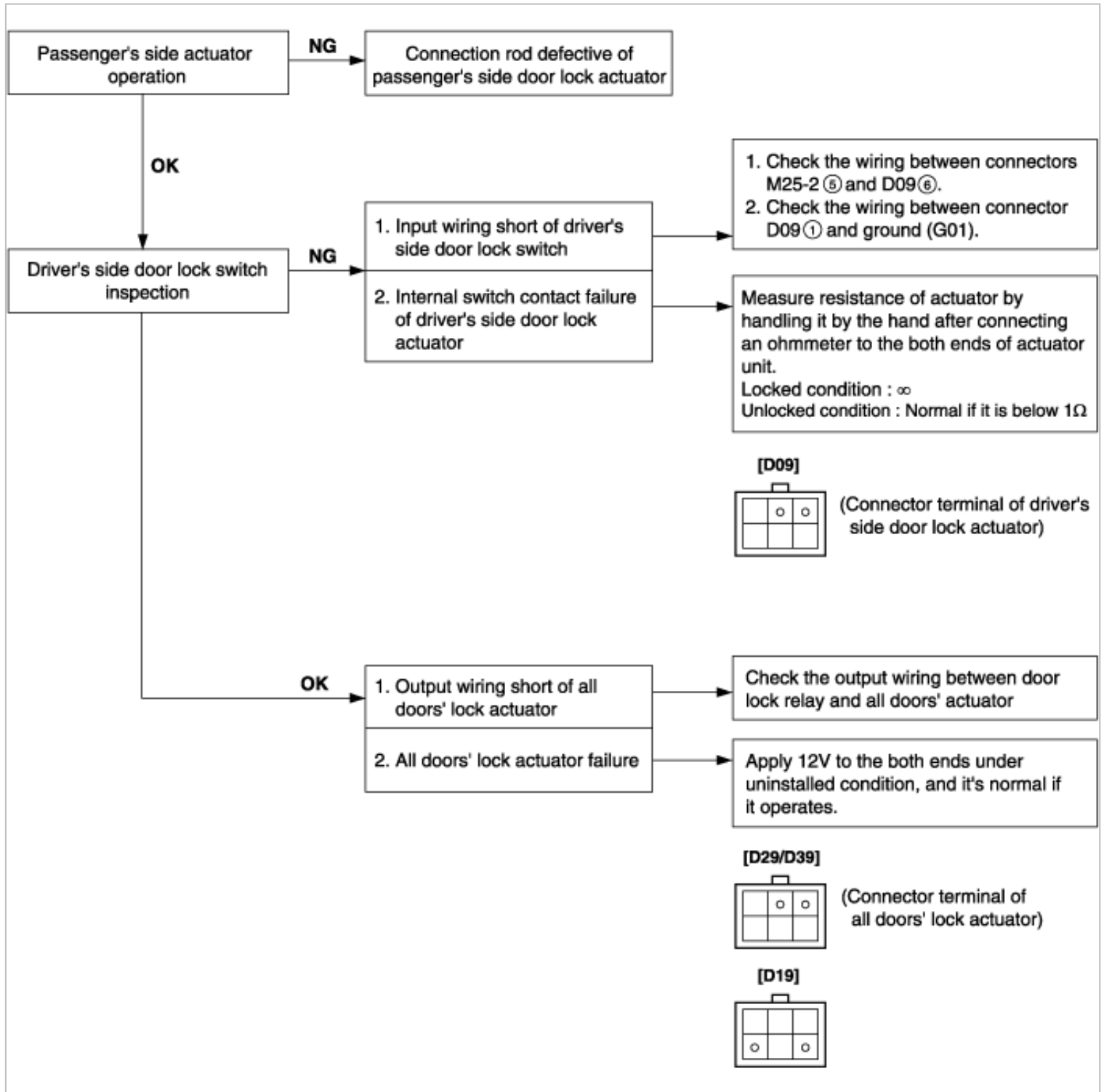
1. Lock function works but unlock function does not work.

→ Since door unlock relay fail, replace the door unlock relay.

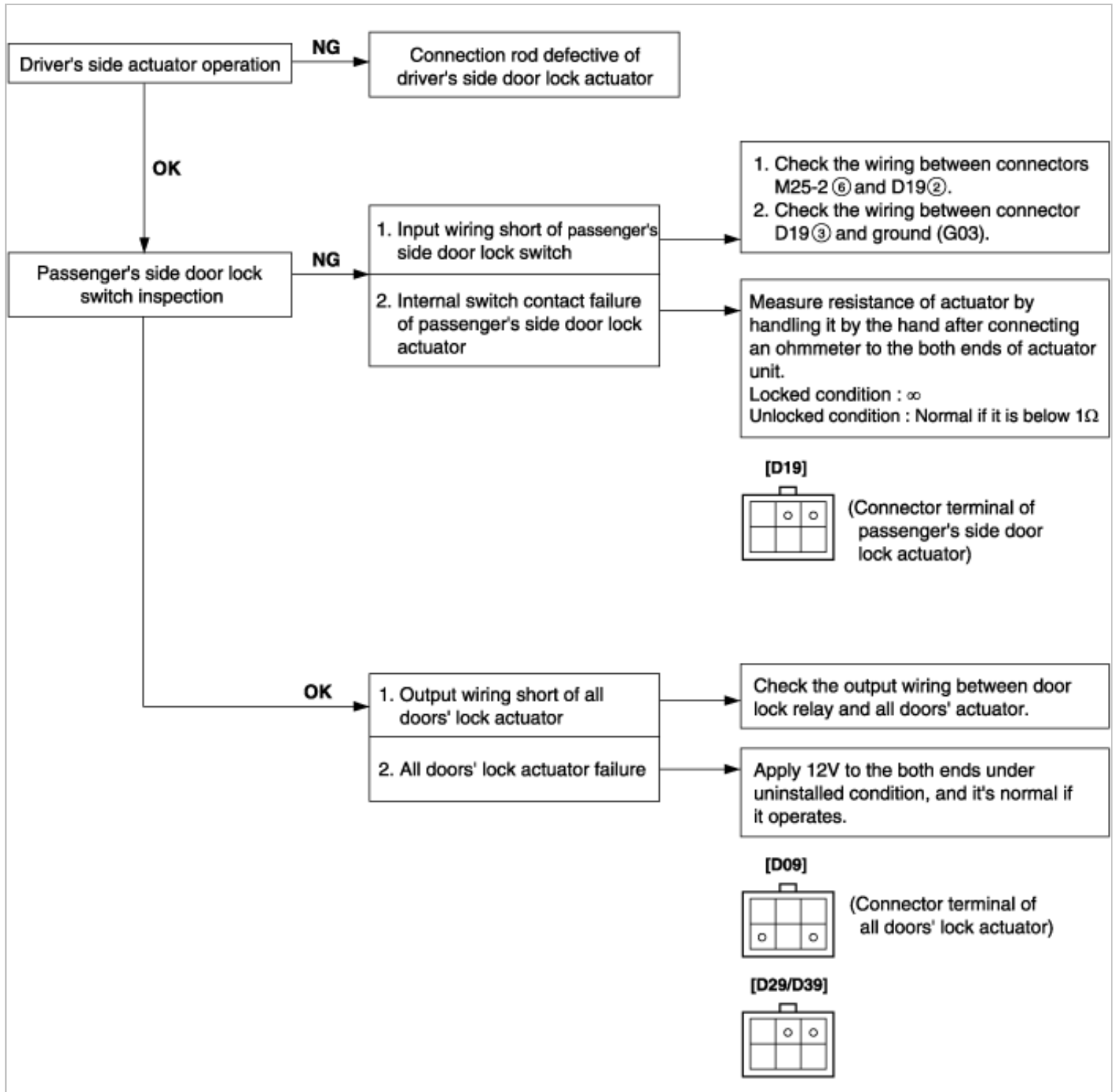
2. Unlock function works but lock function does not work.

→ Since door lock relay fail, replace the door lock relay.

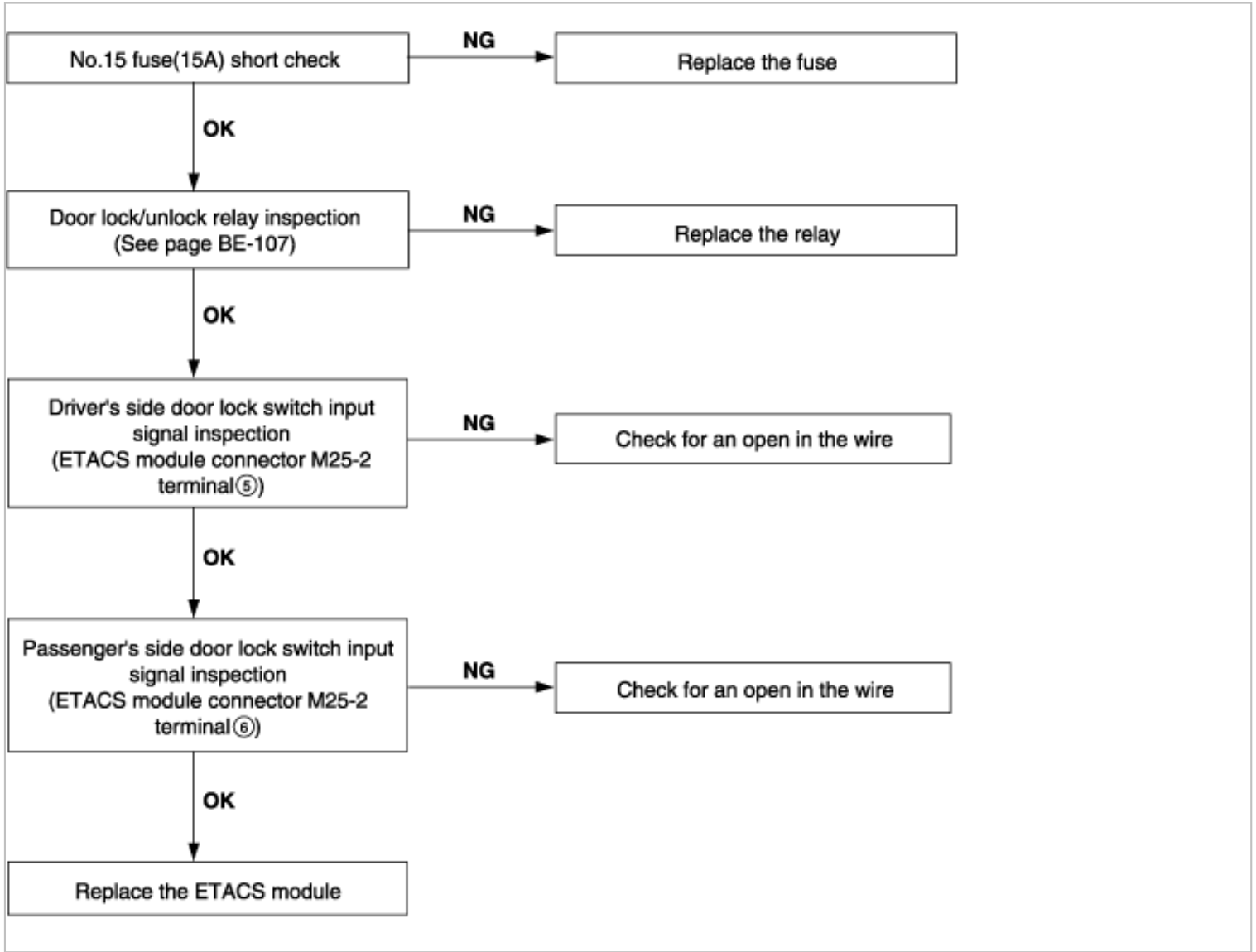
3. When passenger side knob is controlled, all doors interlocks, but when driver side knob is controlled, all doors do not interlock.



4. When passenger side knob is controlled. All doors interlocks. But when the driver side knob is controlled, all doors do not interlock.

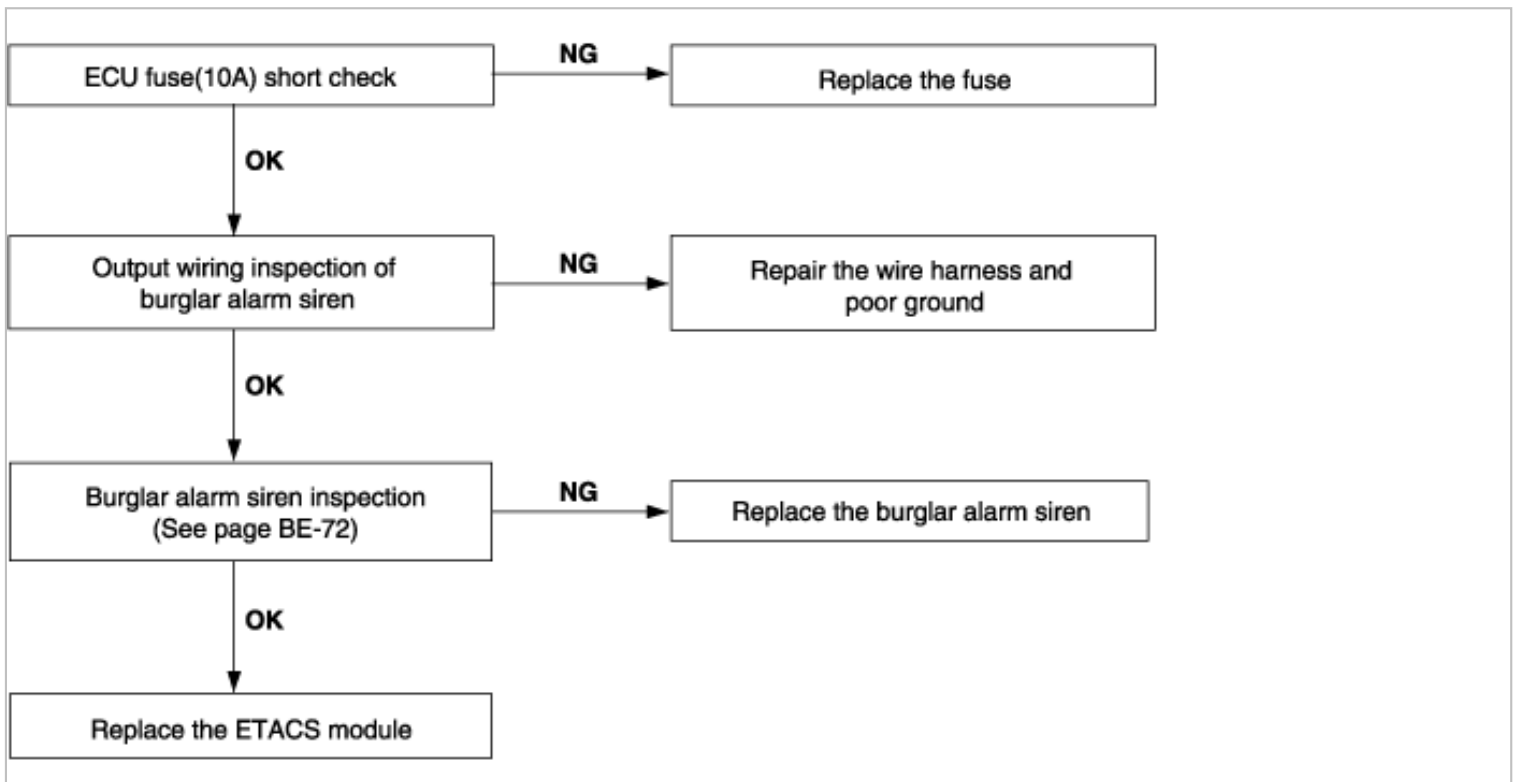


5. Both sides do not interlock either.

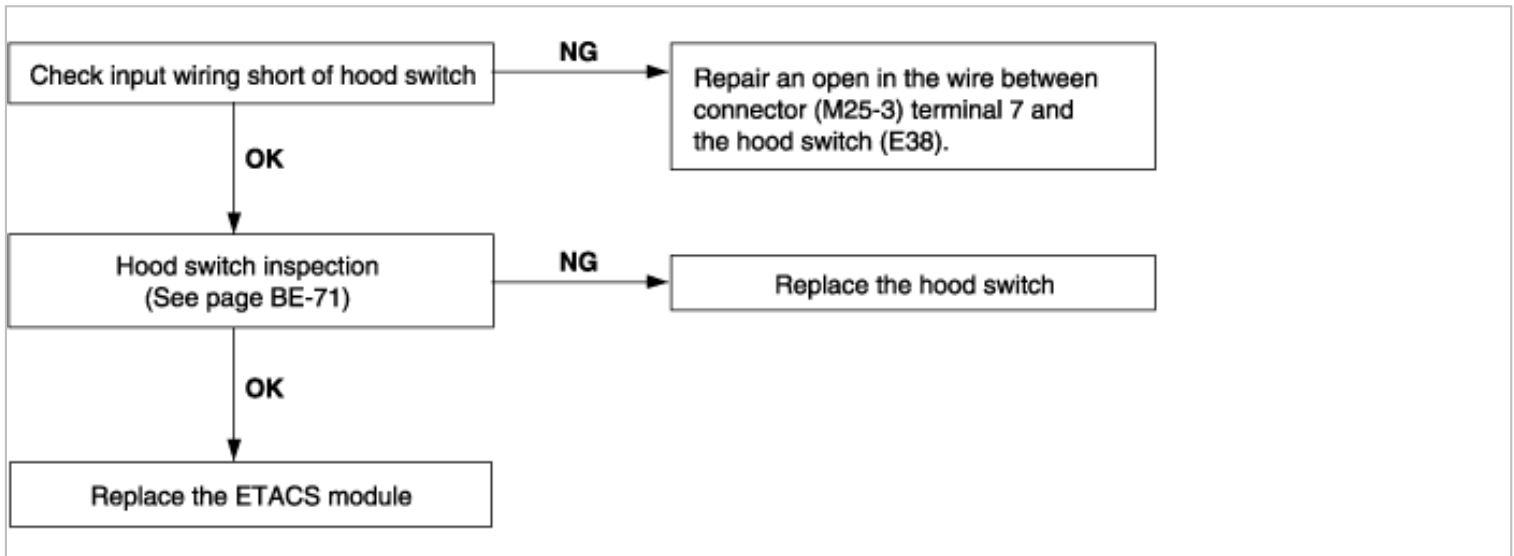


KEYLESS ENTRY & BURGLAR ALARM SYSTEM

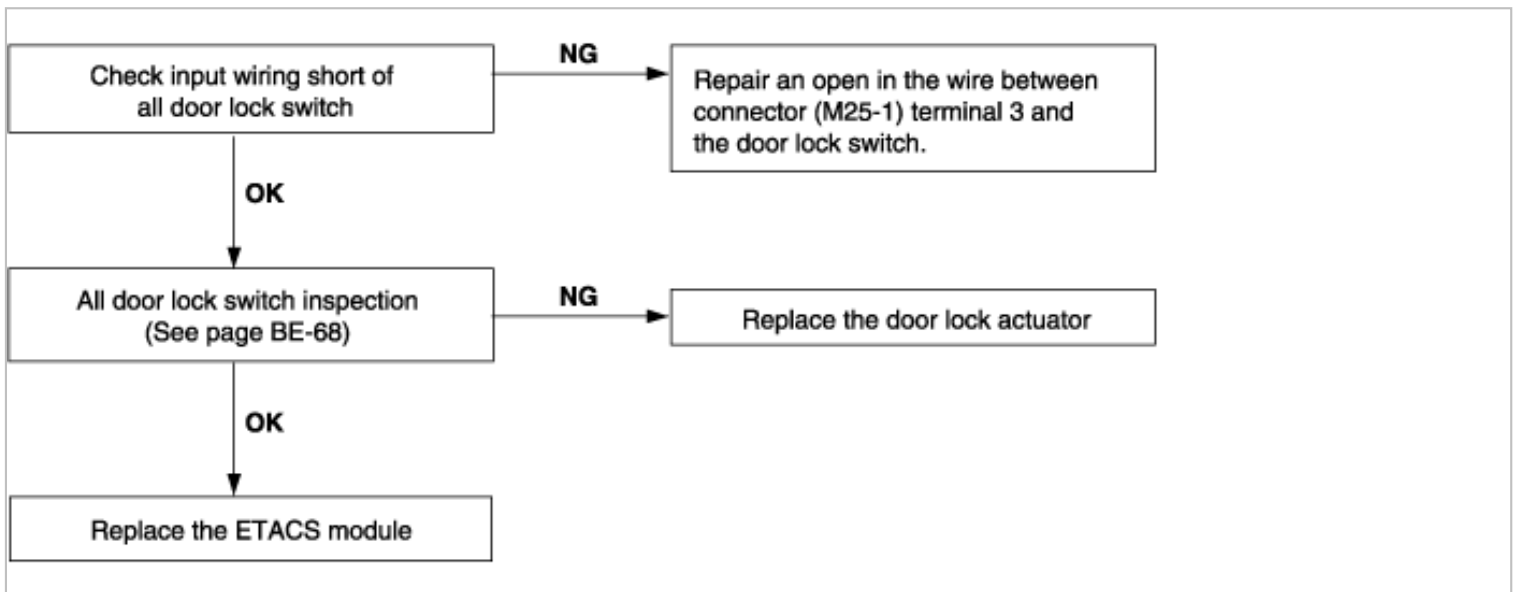
1. Alarm does not work. (Hazard lamp works)



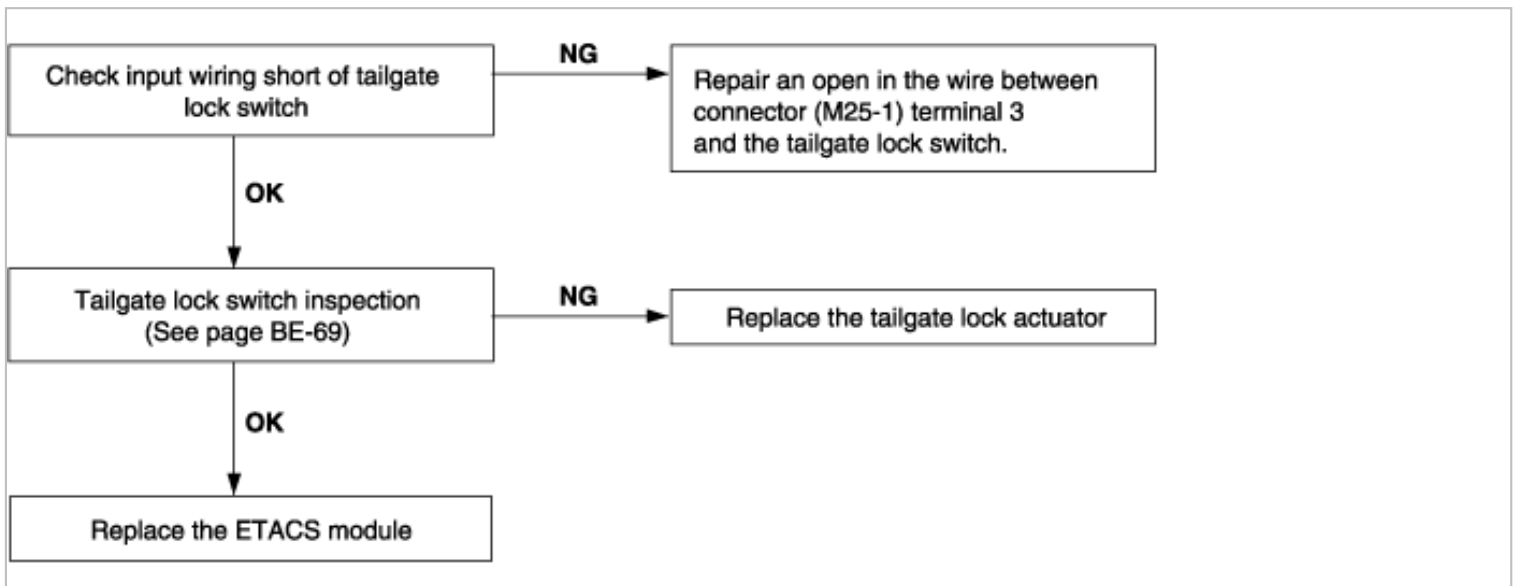
2. When hood is opened from the inside (car alarm test), the siren does not work.



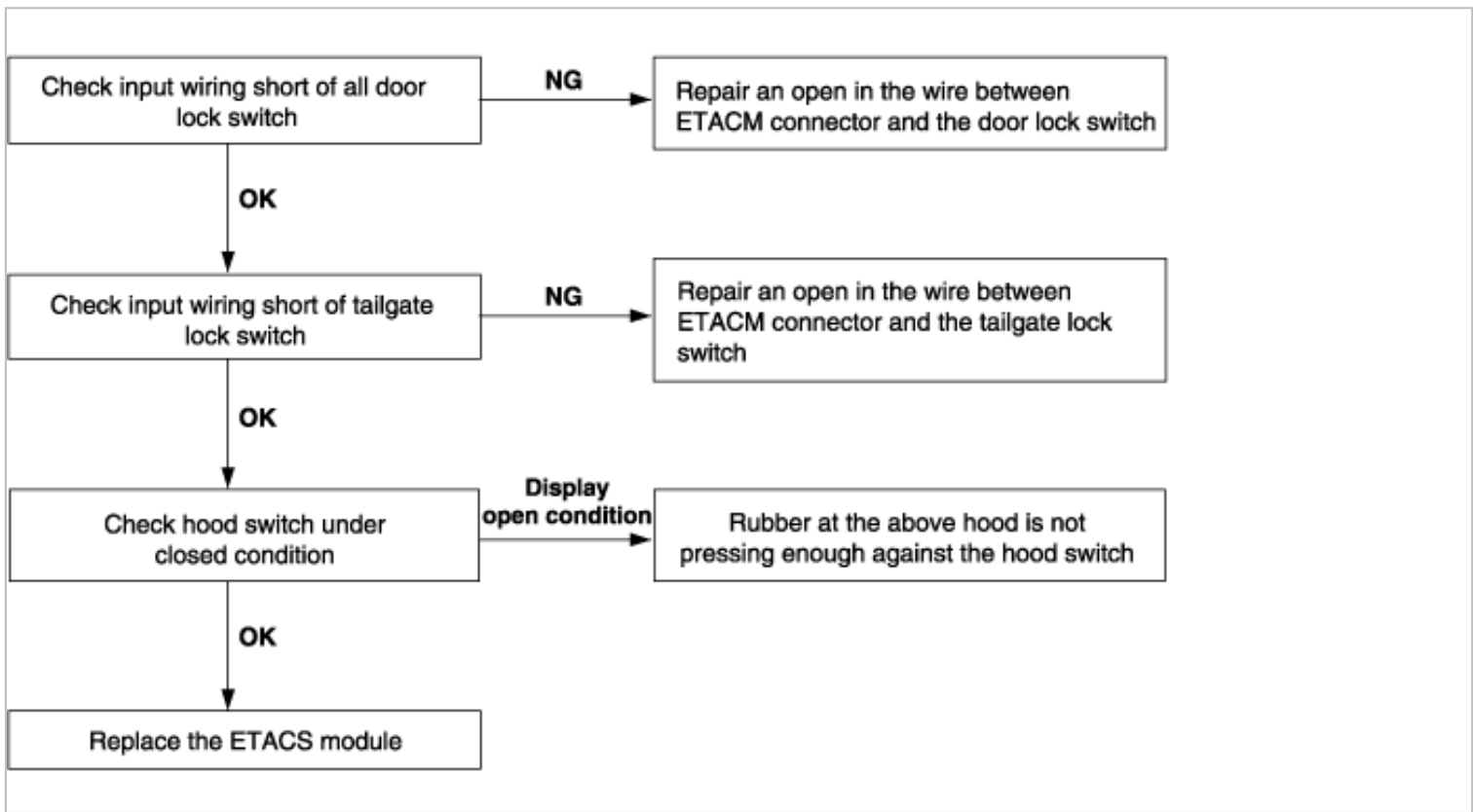
3. When door is opened from the inside (car alarm test), the siren does not work (If tailgate and hood is opened, alarm works)



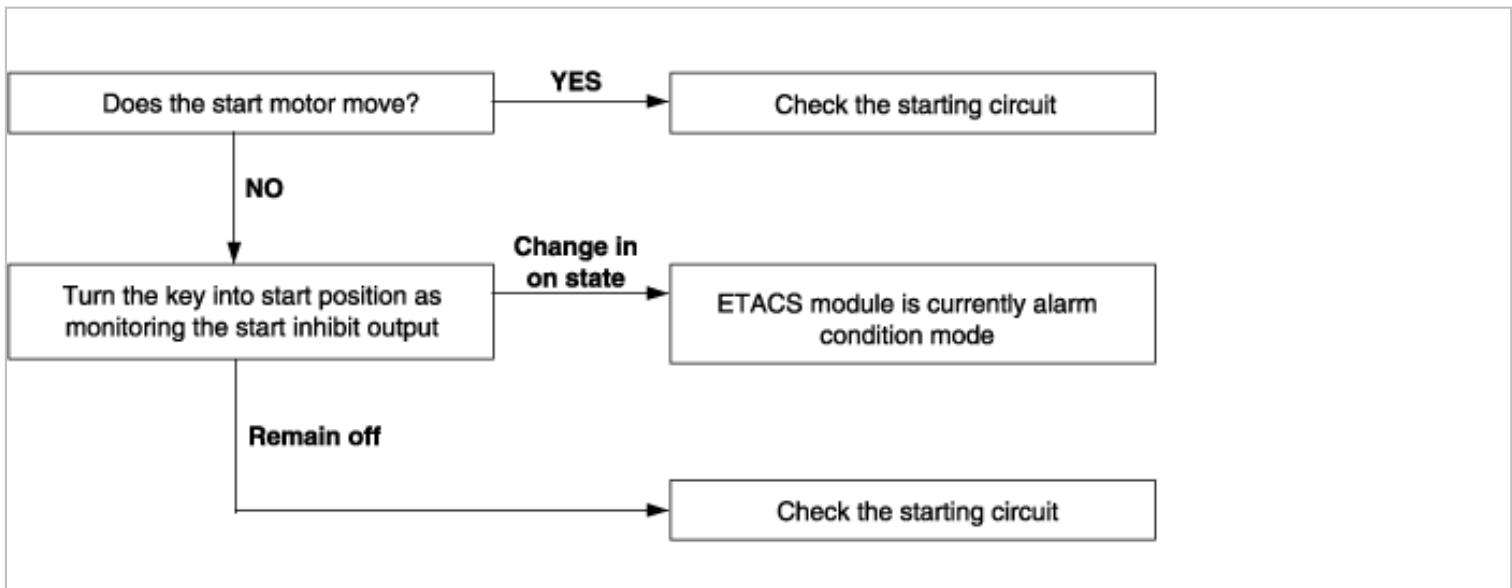
4. When tailgate is opened inside the car like alarm test, siren does not work.



5. When the vehicle is locked by the transmitter, central door lock function works but hazard lamp doesn't blink.



6. Engine does not start, when the alarm released condition.



7. Central door lock function works, but keyless entry system does not work.

