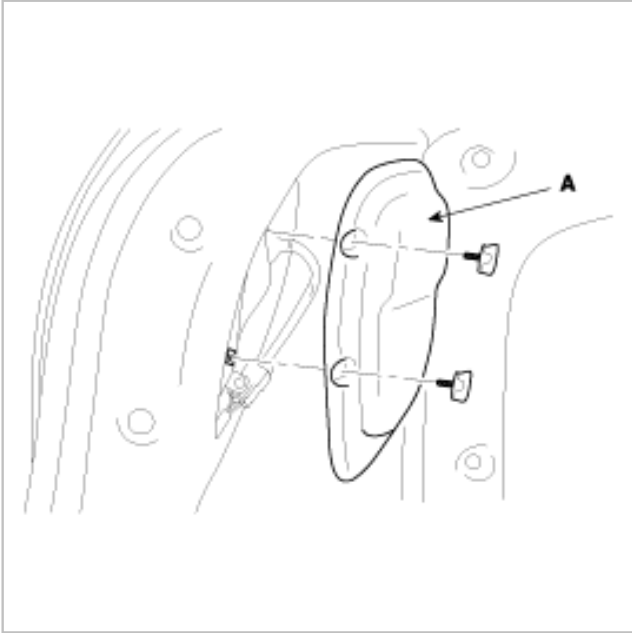


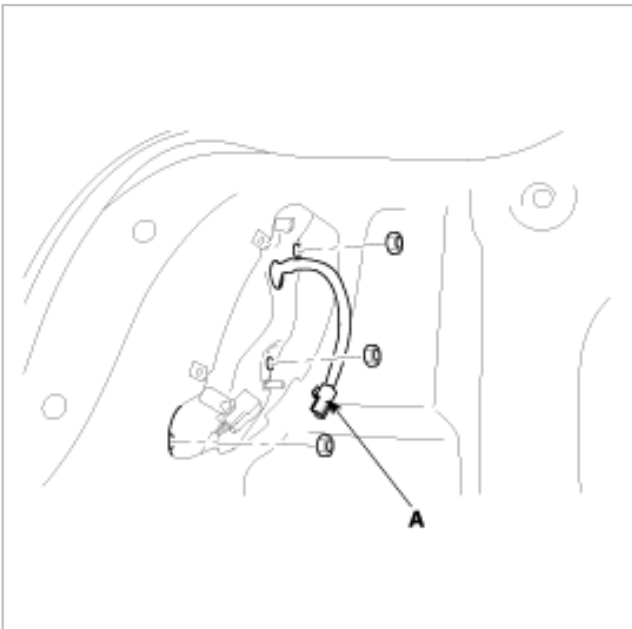


## REMOVAL

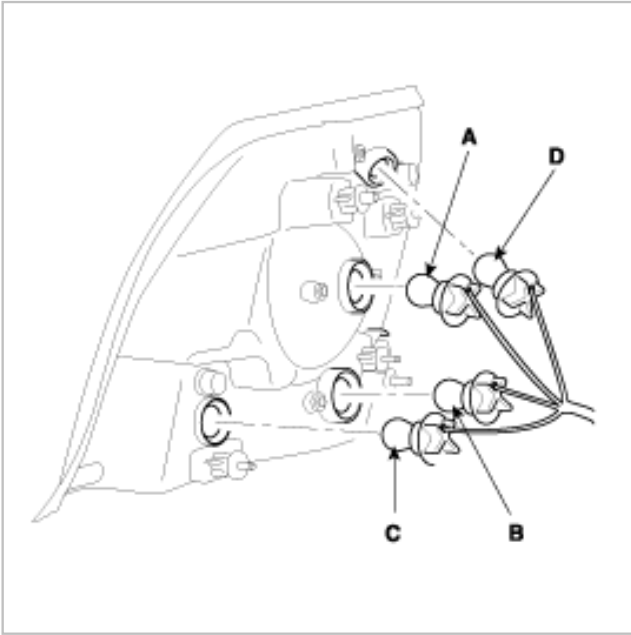
1. Disconnect the negative (-) battery terminal.
2. Remove the cover (A) in the trunk room after removing 2 screws.



3. Remove the 3 nuts holding the rear combination lamp then disconnect the 6P connector (A).



4. Remove the rear combination lamp and replace the bulbs; stop & tail lamp (A), turn signal lamp (B), back up lamp (C) and side marker lamp(D).



5. Installation is the reverse of removal.